

anti- POLE3 antibody

Product Information

Catalog No.:	FNab06610
Size:	100µg
Form:	liquid
Purification:	Immunogen affinity purified
Purity:	≥95% as determined by SDS-PAGE
Host:	Rabbit
Clonality:	polyclonal
Clone ID:	None
IsoType:	IgG
Storage:	PBS with 0.02% sodium azide and 50% glycerol pH 7.3, -20°C for 12 months (Avoid repeated freeze / thaw cycles.)

Background

Forms a complex with DNA polymerase epsilon subunit CHRAC1 and binds naked DNA, which is then incorporated into chromatin, aided by the nucleosome-remodeling activity of ISWI/SNF2H and ACF1.

Immunogen information

Immunogen:	polymerase(DNA directed), epsilon 3(p17 subunit)
Synonyms:	CHRAC17
Observed MW:	17 kDa
UniprotID :	Q9NRF9

Application

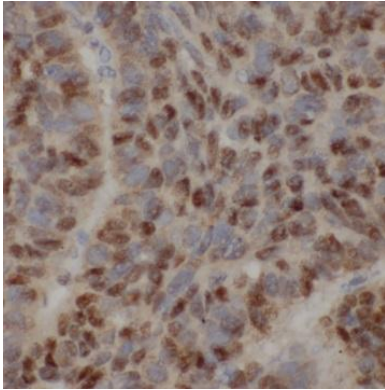
Reactivity:	Human, Mouse, Rat
Tested Application:	ELISA, WB, IHC, IP
Recommended dilution:	WB: 1:500-1:2000; IP: 1:200-1:1000; IHC: 1:20-1:200
Image:	

Wuhan Fine Biotech Co., Ltd.

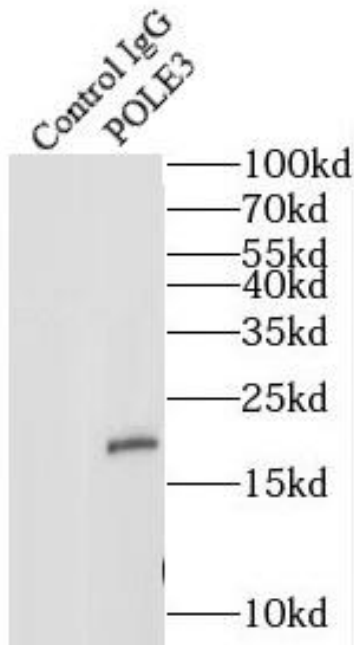
B9 Bld, High-Tech Medical Devices Park, No. 818 GaoxinAve. East Lake High-Tech Development Zone. Wuhan, Hubei, China(430206)

Tel : (0086)027-87384275

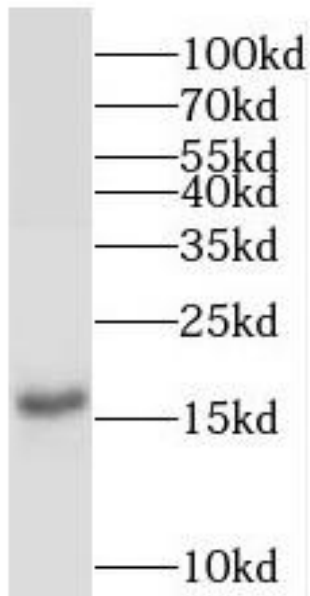
Fax: (0086)027-87800889 www.fn-test.com



Immunohistochemistry of paraffin-embedded human liver cancer using FNab06610(POLE3 antibody) at dilution of 1:100



IP Result of anti-POLE3 (IP:FNab06610, 4ug; Detection:FNab06610 1:1000) with HepG2 cells lysate 1800ug.



HepG2 cells were subjected to SDS PAGE followed by western blot with FNab06610(POLE3 antibody) at dilution of 1:1000