

anti- PLSCR1 antibody

Product Information

Catalog No.:	FNab06560
Size:	100µg
Form:	liquid
Purification:	Immunogen affinity purified
Purity:	≥95% as determined by SDS-PAGE
Host:	Rabbit
Clonality:	polyclonal
Clone ID:	None
IsoType:	IgG
Storage:	PBS with 0.02% sodium azide and 50% glycerol pH 7.3, -20°C for 12 months (Avoid repeated freeze / thaw cycles.)

Background

May mediate accelerated ATP-independent bidirectional transbilayer migration of phospholipids upon binding calcium ions that results in a loss of phospholipid asymmetry in the plasma membrane. May play a central role in the initiation of fibrin clot formation, in the activation of mast cells and in the recognition of apoptotic and injured cells by the reticuloendothelial system. May play a role in the antiviral response of interferon(IFN) by amplifying and enhancing the IFN response through increased expression of select subset of potent antiviral genes. May contribute to cytokine-regulated cell proliferation and differentiation.

Immunogen information

Immunogen:	phospholipid scramblase 1
Synonyms:	MMTRA1B, phospholipid scramblase 1, PL scramblase 1, PLSCR1
Observed MW:	35 kDa
Uniprot ID :	O15162

Application

Reactivity:	Human, Mouse, Rat
-------------	-------------------

Wuhan Fine Biotech Co., Ltd.

B9 Bld, High-Tech Medical Devices Park, No. 818 Gaoxin Ave. East Lake High-Tech Development Zone. Wuhan, Hubei, China(430206)

Tel : (0086)027-87384275

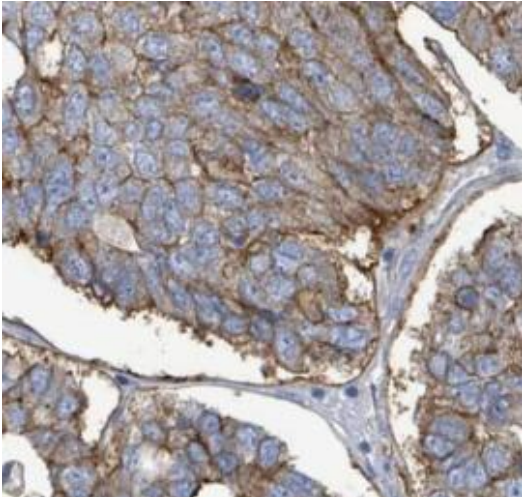
Fax: (0086)027-87800889

www.fn-test.com

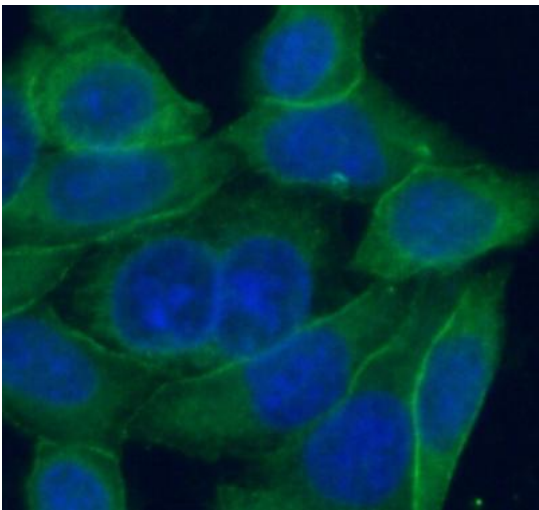
Tested Application: ELISA, WB, IHC, FC, IF, IP

Recommended dilution: WB: 1:1000-1:4000; IP: 1:500-1:1000; IHC: 1:20-1:200; IF: 1:20-1:200

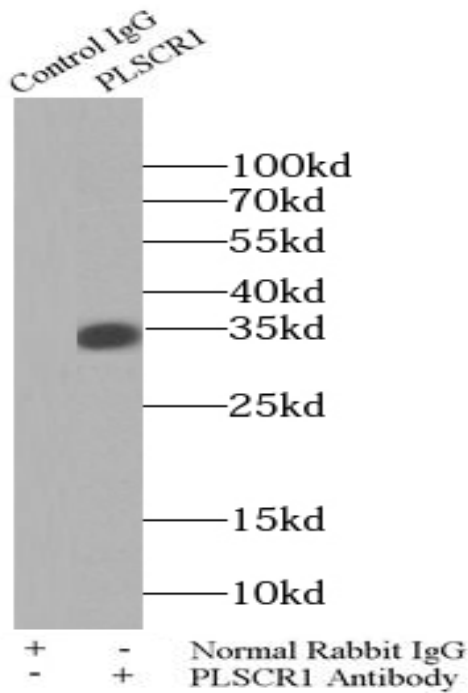
Image:



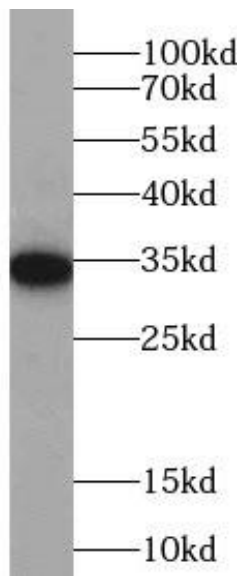
Immunohistochemistry of paraffin-embedded human pancreas cancer using FNab06560(PLSCR1 antibody) at dilution of 1:100



Immunofluorescent analysis of HeLa cells using PLSCR1 antibody (FNab06560) at dilution of 1:50 and FITC-Goat Anti-Rabbit IgG (H+L)



IP Result of anti-PLSCR1 (IP: FNab06560, 4ug;
Detection: FNab06560 1:500) with mouse lung
tissue lysate 2800ug.



human skeletal muscle tissue were subjected to
SDS PAGE followed by western blot with
FNab06560(PLSCR1 antibody) at dilution of
1:2000