

## anti- PLCH1 antibody

### Product Information

Catalog No.:	FNab06528
Size:	100µg
Form:	liquid
Purification:	Immunogen affinity purified
Purity:	≥95% as determined by SDS-PAGE
Host:	Rabbit
Clonality:	polyclonal
Clone ID:	None
IsoType:	IgG
Storage:	PBS with 0.02% sodium azide and 50% glycerol pH 7.3, -20°C for 12 months (Avoid repeated freeze / thaw cycles.)

### Background

The production of the second messenger molecules diacylglycerol(DAG) and inositol 1,4,5-trisphosphate(IP3) is mediated by calcium-activated phosphatidylinositol-specific phospholipase C enzymes.

### Immunogen information

Immunogen:	phospholipase C, eta 1
Synonyms:	KIAA1069, PLCL3
Observed MW:	185 kDa
UniprotID :	Q4KWH8

### Application

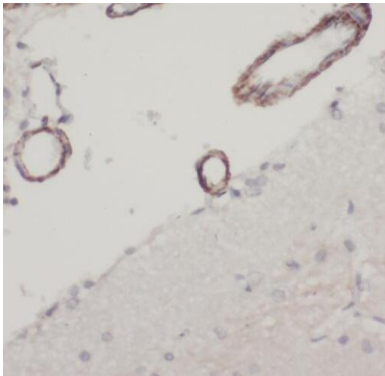
Reactivity:	Human, Mouse, Rat
Tested Application:	ELISA, WB, IHC, IF
Recommended dilution:	WB: 1:500-1:2000; IHC: 1:20-1:200; IF: 1:20-1:200
Image:	

### Wuhan Fine Biotech Co., Ltd.

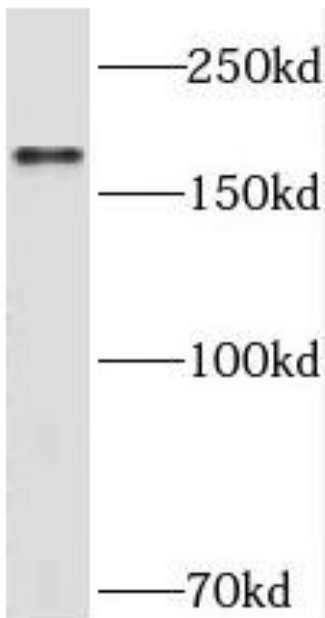
B9 Bld, High-Tech Medical Devices Park, No. 818 GaoxinAve. East Lake High-Tech Development Zone. Wuhan, Hubei, China(430206)

Tel : (0086)027-87384275

Fax: (0086)027-87800889 [www.fn-test.com](http://www.fn-test.com)



Immunohistochemistry of paraffin-embedded human brain using FNab06528(PLCH1 antibody) at dilution of 1:50



HEK-293 cells were subjected to SDS PAGE followed by western blot with FNab06528(PLCH1 antibody) at dilution of 1:300