

## anti- PLA2G1B antibody

### Product Information

Catalog No.:	FNab06503
Size:	100µg
Form:	liquid
Purification:	Immunogen affinity purified
Purity:	≥95% as determined by SDS-PAGE
Host:	Rabbit
Clonality:	polyclonal
Clone ID:	None
IsoType:	IgG
Storage:	PBS with 0.02% sodium azide and 50% glycerol pH 7.3, -20°C for 12 months (Avoid repeated freeze / thaw cycles.)

### Background

PA2 catalyzes the calcium-dependent hydrolysis of the 2-acyl groups in 3-sn-phosphoglycerides, this releases glycerophospholipids and arachidonic acid that serve as the precursors of signal molecules.

### Immunogen information

Immunogen:	phospholipase A2, group IB(pancreas)
Synonyms:	PLA2, PLA2A, PPLA2
Observed MW:	13-16 kDa
Uniprot ID :	P04054

### Application

Reactivity:	Human, Mouse, Rat
Tested Application:	ELISA, IHC, WB
Recommended dilution:	WB: 1:200-1:2000; IHC: 1:20-1:200
Image:	

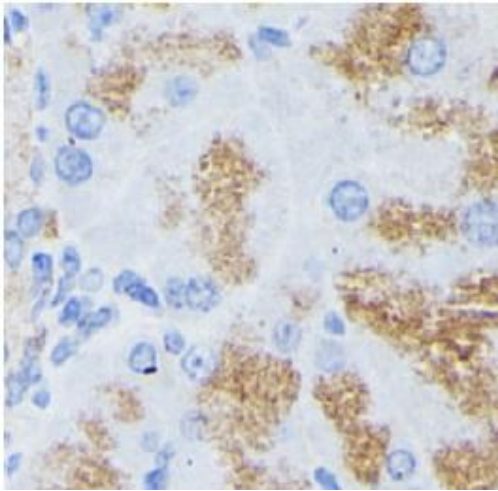
### Wuhan Fine Biotech Co., Ltd.

B9 Bld, High-Tech Medical Devices Park, No. 818 Gaoxin Ave. East Lake High-Tech Development Zone. Wuhan, Hubei, China(430206)

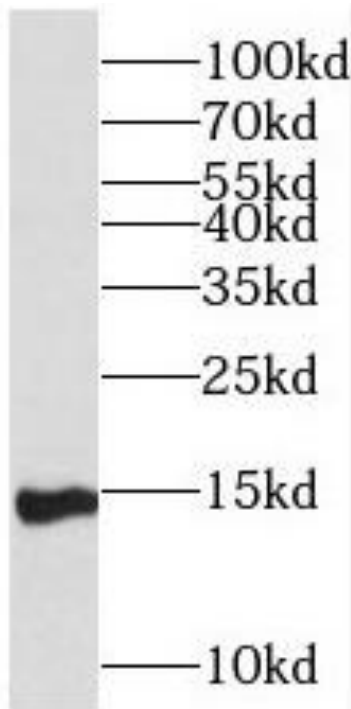
Tel : (0086)027-87384275

Fax: (0086)027-87800889

[www.fn-test.com](http://www.fn-test.com)



Immunohistochemistry of paraffin-embedded mouse pancreas using FNab06503(PLA2G1B antibody) at dilution of 1:50



mouse spleen tissue were subjected to SDS PAGE followed by western blot with FNab06503( PLA2G1B Antibody) at dilution of 1:300