

anti- phospho-RCC1(Ser12) antibody

Product Information

Catalog No.:	FNab06406
Size:	100µg
Form:	liquid
Purification:	Immunogen affinity purified
Purity:	≥95% as determined by SDS-PAGE
Host:	Rabbit
Clonality:	polyclonal
Clone ID:	None
IsoType:	IgG
Storage:	PBS with 0.02% sodium azide and 50% glycerol pH 7.3, -20°C for 12 months (Avoid repeated freeze / thaw cycles.)

Immunogen information

Immunogen:	regulator of chromosome condensation 1
Synonyms:	None
Observed MW:	48 kDa
Uniprot ID :	P18754

Application

Reactivity:	Human, Mouse, Rat
Tested Application:	ELISA, WB, IHC
Recommended dilution:	WB: 1:500-1:1000; IHC: 1:20-1:200
Image:	

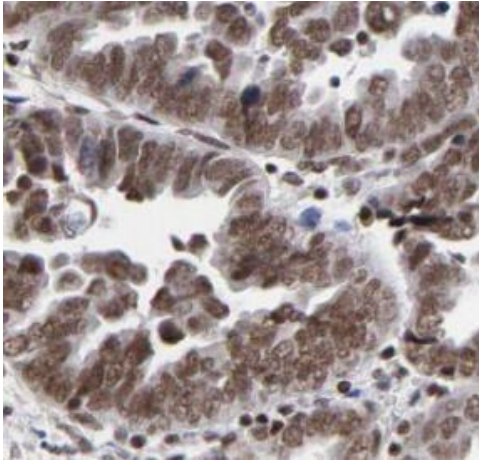
Wuhan Fine Biotech Co., Ltd.

B9 Bld, High-Tech Medical Devices Park, No. 818 Gaoxin Ave. East Lake High-Tech Development Zone. Wuhan, Hubei, China(430206)

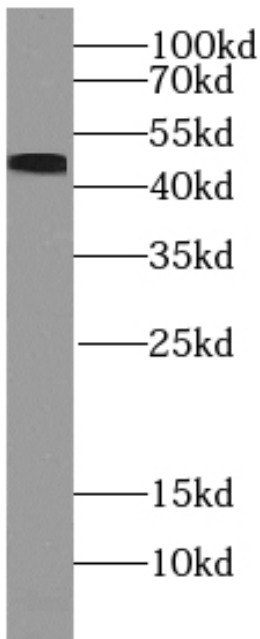
Tel : (0086)027-87384275

Fax: (0086)027-87800889

www.fn-test.com



Immunohistochemistry of paraffin-embedded human ovary tumor using FNab06406(phospho-CHC1(Ser12) antibody) at dilution of 1:50



HeLa cells were subjected to SDS PAGE followed by western blot with FNab06406(phospho-CHC1(Ser12) antibody) at dilution of 1:300