

anti- PGM1 antibody

Product Information

Catalog No.:	FNab06360
Size:	100µg
Form:	liquid
Purification:	Protein A+G purification
Purity:	≥95% as determined by SDS-PAGE
Host:	Mouse
Clonality:	monoclonal
Clone ID:	0F6
IsoType:	IgG1
Storage:	PBS with 0.02% sodium azide and 50% glycerol pH 7.3, -20°C for 12 months (Avoid repeated freeze / thaw cycles.)

Background

This enzyme participates in both the breakdown and synthesis of glucose.

Immunogen information

Immunogen:	phosphoglucomutase 1
Synonyms:	None
Observed MW:	61 kDa
UniprotID :	P36871

Application

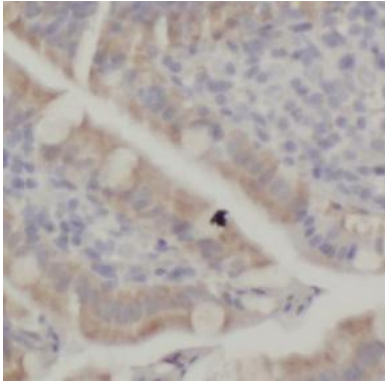
Reactivity:	Human
Tested Application:	ELISA, WB, IHC, IF
Recommended dilution:	WB: 1:500-1:2000; IHC: 1:50-1:500; IF: 1:20-1:200
Image:	

Wuhan Fine Biotech Co., Ltd.

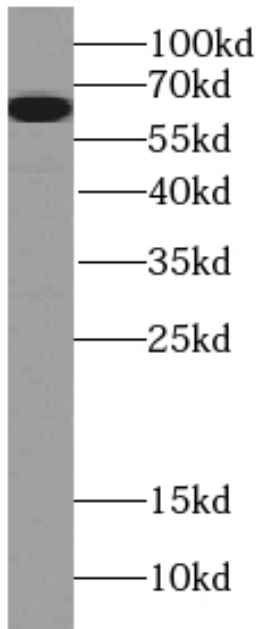
B9 Bld, High-Tech Medical Devices Park, No. 818 GaoxinAve. East Lake High-Tech Development Zone. Wuhan, Hubei, China(430206)

Tel : (0086)027-87384275

Fax: (0086)027-87800889 www.fn-test.com



Immunohistochemistry of paraffin-embedded human colon tissue slide using FNab06360 (PGM1 Antibody) at dilution of 1:200



HepG2 cells were subjected to SDS PAGE followed by western blot with FNab06360 (PGM1 antibody) at dilution of 1:1000