

## anti- PDHB antibody

### Product Information

Catalog No.:	FNab06270
Size:	100µg
Form:	liquid
Purification:	Immunogen affinity purified
Purity:	≥95% as determined by SDS-PAGE
Host:	Rabbit
Clonality:	polyclonal
Clone ID:	None
IsoType:	IgG
Storage:	PBS with 0.02% sodium azide and 50% glycerol pH 7.3, -20°C for 12 months (Avoid repeated freeze / thaw cycles.)

### Background

The pyruvate dehydrogenase complex catalyzes the overall conversion of pyruvate to acetyl-CoA and CO(2), and thereby links the glycolytic pathway to the tricarboxylic cycle.

### Immunogen information

Immunogen:	pyruvate dehydrogenase(lipoamide) beta
Synonyms:	PDHB, PDHE 1B, PDHE1 B, PDHE1B, PHE1B, Pyruvate Dehydrogenase E1 beta subunit
Observed MW:	35 kDa
UniprotID :	P11177

### Application

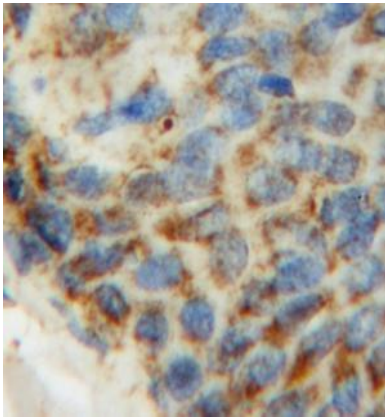
Reactivity:	Human, Mouse, Rat
Tested Application:	ELISA, WB, IHC, IP
Recommended dilution:	WB: 1:1000-1:6000; IP: 1:200-1:1000; IHC: 1:20-1:200
Image:	

### Wuhan Fine Biotech Co., Ltd.

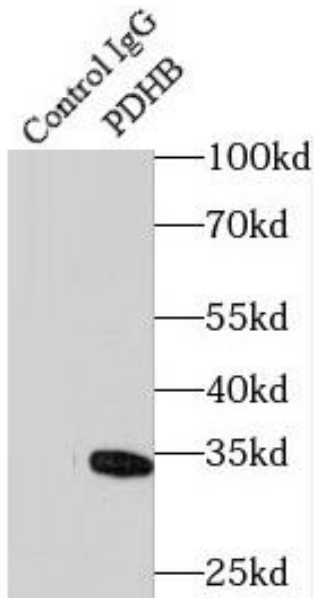
B9 Bld, High-Tech Medical Devices Park, No. 818 GaoxinAve.East Lake High-Tech Development Zone.Wuhan, Hubei, China(430206)

Tel : (0086)027-87384275

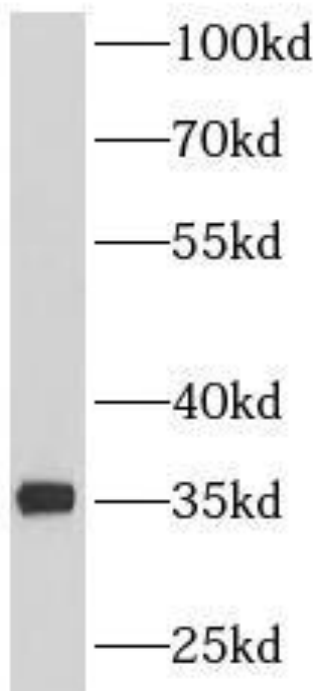
Fax: (0086)027-87800889 [www.fn-test.com](http://www.fn-test.com)



Immunohistochemistry of paraffin-embedded human skin cancer using FNab06270(PDHB antibody) at dilution of 1:100



IP Result of anti-PDHB (IP:FNab06270, 4ug; Detection:FNab06270 1:300) with mouse heart tissue lysate 4000ug.



human heart tissue were subjected to SDS PAGE followed by western blot with FNab06270(PDHB antibody) at dilution of 1:300