

anti- PDE9A antibody

Product Information

Catalog No.:	FNab06263
Size:	100µg
Form:	liquid
Purification:	Immunogen affinity purified
Purity:	≥95% as determined by SDS-PAGE
Host:	Rabbit
Clonality:	polyclonal
Clone ID:	None
IsoType:	IgG
Storage:	PBS with 0.02% sodium azide and 50% glycerol pH 7.3, -20°C for 12 months (Avoid repeated freeze / thaw cycles.)

Background

Specifically hydrolyzes the second messenger cGMP, which is a key regulator of many important physiological processes. Highly specific: compared to other members of the cyclic nucleotide phosphodiesterase family, has the highest affinity and selectivity for cGMP(PubMed:9624146, PubMed:18757755, PubMed:21483814). Specifically regulates natriuretic-peptide-dependent cGMP signaling in heart, acting as a regulator of cardiac hypertrophy in myocytes and muscle. Does not regulate nitric oxide-dependent cGMP in heart(PubMed:25799991). Additional experiments are required to confirm whether its ability to hydrolyze natriuretic-peptide-dependent cGMP is specific to heart or is a general feature of the protein(Probable). In brain, involved in cognitive function, such as learning and long-term memory(By similarity).

Immunogen information

Immunogen:	phosphodiesterase 9A
Synonyms:	HSPDE9A2, PDE9A, phosphodiesterase 9A
Observed MW:	None
Uniprot ID :	O76083

Application

1

Wuhan Fine Biotech Co., Ltd.

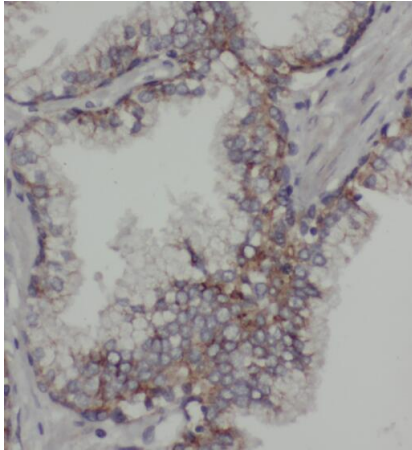
B9 Bld, High-Tech Medical Devices Park, No. 818 Gaoxin Ave. East Lake High-Tech Development Zone. Wuhan, Hubei, China(430206)

Tel : (0086)027-87384275

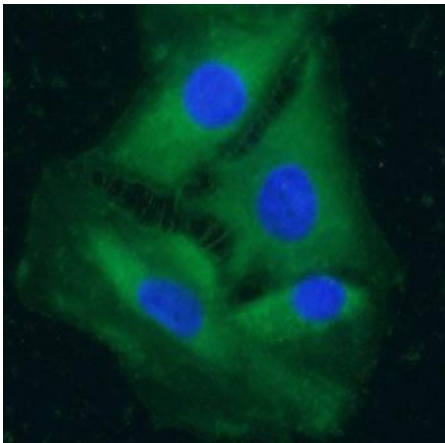
Fax: (0086)027-87800889

www.fn-test.com

Reactivity: Human, Mouse, Rat
Tested Application: ELISA, IF, IHC
Recommended dilution: IHC: 1:100-1:200; IF: 1:50-1:500
Image:



Immunohistochemistry of paraffin-embedded human prostate cancer tissue slide using FNab06263(PDE9A Antibody) at dilution of 1:200



Immunofluorescent analysis of (-20°C Ethanol) fixed A549 cells using FNab06263 (PDE9A antibody) at dilution of 1:50 and Alexa Fluor 488-conjugated Goat Anti-Rabbit IgG(H+L)