

anti- PDE4D antibody

Product Information

| | |
|---------------|---|
| Catalog No.: | FNab06255 |
| Size: | 100µg |
| Form: | liquid |
| Purification: | Immunogen affinity purified |
| Purity: | ≥95% as determined by SDS-PAGE |
| Host: | Rabbit |
| Clonality: | polyclonal |
| Clone ID: | None |
| IsoType: | IgG |
| Storage: | PBS with 0.02% sodium azide and 50% glycerol pH 7.3, -20°C for 12 months (Avoid repeated freeze / thaw cycles.) |

Background

This gene encodes one of four mammalian counterparts to the fruit fly *dunce* gene. The encoded protein has 3', 5'-cyclic-AMP phosphodiesterase activity and degrades cAMP, which acts as a signal transduction molecule in multiple cell types. This gene uses different promoters to generate multiple alternatively spliced transcript variants that encode functional proteins.

Immunogen information

| | |
|--------------|---|
| Immunogen: | phosphodiesterase 4D, cAMP-specific (phosphodiesterase E3 <i>dunce</i> homolog, <i>Drosophila</i>) |
| Synonyms: | DPDE3 |
| Observed MW: | 91 kDa, 105 kDa |
| Uniprot ID : | Q08499 |

Application

| | |
|---------------------|----------------|
| Reactivity: | Human, Mouse |
| Tested Application: | ELISA, WB, IHC |

Wuhan Fine Biotech Co., Ltd.

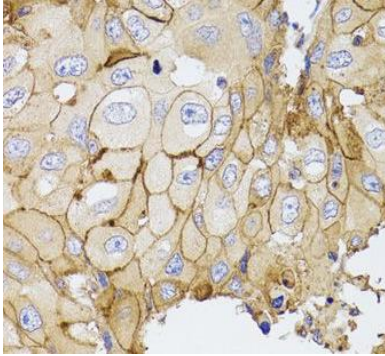
B9 Bld, High-Tech Medical Devices Park, No. 818 Gaoxin Ave. East Lake High-Tech Development Zone. Wuhan, Hubei, China(430206)

Tel : (0086)027-87384275

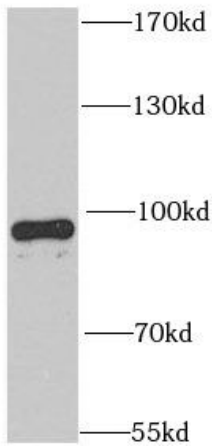
Fax: (0086)027-87800889 www.fn-test.com

Recommended dilution: WB: 1:500 - 1:2000; IHC: 1:50 - 1:100

Image:



Immunohistochemistry of paraffin-embedded human breast cancer using FNab06255(PDE4D antibody) at dilution of 1:100



mouse brain tissue were subjected to SDS PAGE followed by western blot with FNab06255(PED4D antibody) at dilution of 1:1000

Wuhan Fine Biotech Co., Ltd.

B9 Bld, High-Tech Medical Devices Park, No. 818 Gaoxin Ave. East Lake High-Tech Development Zone. Wuhan, Hubei, China(430206)

Tel : (0086)027-87384275

Fax: (0086)027-87800889 www.fn-test.com