

## anti- PCOLCE antibody

### Product Information

Catalog No.:	FNab06220
Size:	100µg
Form:	liquid
Purification:	Immunogen affinity purified
Purity:	≥95% as determined by SDS-PAGE
Host:	Rabbit
Clonality:	polyclonal
Clone ID:	None
IsoType:	IgG
Storage:	PBS with 0.02% sodium azide and 50% glycerol pH 7.3, -20°C for 12 months (Avoid repeated freeze / thaw cycles.)

### Background

Binds to the C-terminal propeptide of type I procollagen and enhances procollagen C-proteinase activity. C-terminal processed part of PCPE(CT-PCPE) may have an metalloproteinase inhibitory activity.

### Immunogen information

Immunogen:	procollagen C-endopeptidase enhancer
Synonyms:	PCPE1
Observed MW:	48KD
UniprotID :	Q15113

### Application

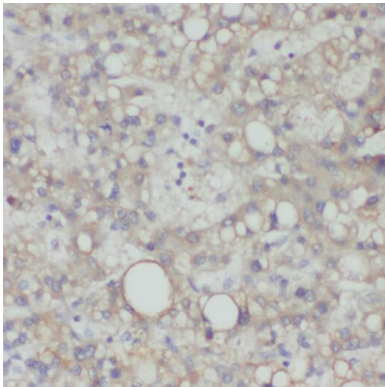
Reactivity:	Human, Mouse, Rat
Tested Application:	ELISA, WB, IHC
Recommended dilution:	WB: 1:500-1:2000; IHC: 1:20-1:200
Image:	

### Wuhan Fine Biotech Co., Ltd.

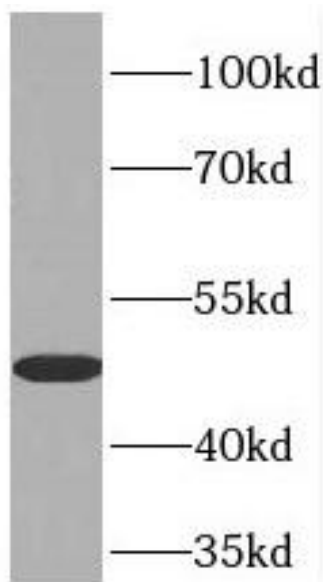
B9 Bld, High-Tech Medical Devices Park, No. 818 GaoxinAve.East Lake High-Tech Development Zone.Wuhan, Hubei, China(430206)

Tel :( 0086)027-87384275

Fax: (0086)027-87800889 [www.fn-test.com](http://www.fn-test.com)



Immunohistochemistry of paraffin-embedded human liver cancer using FNab06220(PCOLCE antibody) at dilution of 1:100



HeLa cells were subjected to SDS PAGE followed by western blot with FNab06220(PCOLCE antibody) at dilution of 1:500