

anti- P27; KIP1 antibody

Product Information

Catalog No.:	FNab06068
Size:	100µg
Form:	liquid
Purification:	Immunogen affinity purified
Purity:	≥95% as determined by SDS-PAGE
Host:	Rabbit
Clonality:	polyclonal
Clone ID:	None
IsoType:	IgG
Storage:	PBS with 0.02% sodium azide and 50% glycerol pH 7.3, -20°C for 12 months (Avoid repeated freeze / thaw cycles.)

Background

CDKN1B, also named as P27 or KIP1, is a cyclin-dependent kinase inhibitor, which shares a limited similarity with CDK inhibitor CDKN1A/p21. P27 binds to and prevents the activation of cyclin E-CDK2 or cyclin D-CDK4 complexes, and thus controlling cell cycle progression at G1. The degradation of this protein, which is triggered by its CDK dependent phosphorylation and subsequent ubiquitination by SCF complexes, is required for the cellular transition from quiescence to the proliferative state. Downregulation of P27 has been implicated in the progression of several malignancies, including lung cancer, hepatocellular carcinoma, salivary cancer, oral squamous cell carcinomas, and gastric cancer.

Immunogen information

Immunogen:	cyclin-dependent kinase inhibitor 1B(p27, Kip1)
Synonyms:	CDKN1B, CDKN4, KIP1, MEN1B, MEN4, P27, P27; KIP1, P27KIP1
Observed MW:	21 kDa
Uniprot ID :	P46527

Application

Wuhan Fine Biotech Co., Ltd.

B9 Bld, High-Tech Medical Devices Park, No. 818 Gaoxin Ave. East Lake High-Tech Development Zone. Wuhan, Hubei, China(430206)

Tel : (0086)027-87384275

Fax: (0086)027-87800889

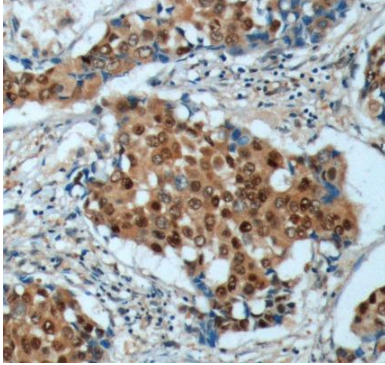
www.fn-test.com

Reactivity: Human, Mouse, Rat

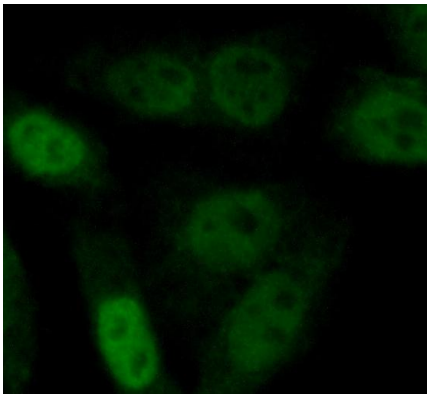
Tested Application: ELISA, WB, IP, IHC, IF

Recommended dilution: WB: 1:200-1:2000; IP: 1:200-1:1000; IHC: 1:50-1:500; IF: 1:50-1:500

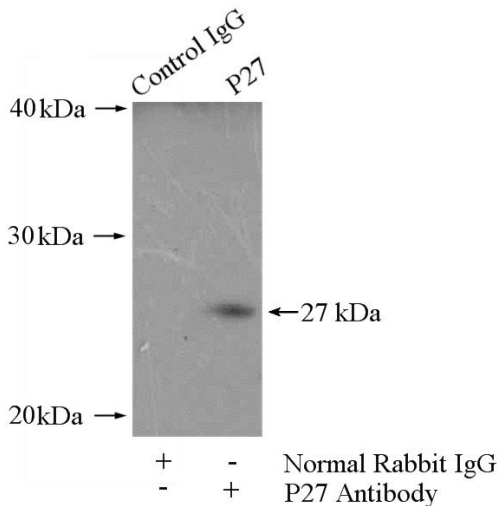
Image:



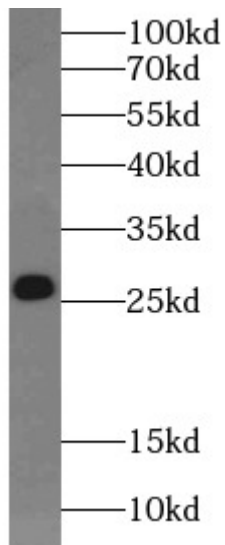
Immunohistochemistry of paraffin-embedded human breast cancer tissue slide using FNab06068(P27; KIP1 Antibody) at dilution of 1:200. heat mediated antigen retrieved with Tris-EDTA buffer(pH9).



Immunofluorescent analysis of (4% PFA) fixed HepG2 cells using FNab06068(P27; KIP1 Antibody) at dilution of 1:50 and Alexa Fluor 488-conjugated Goat Anti-Rabbit IgG(H+L)



IP Result of anti-P27; KIP1 (IP:FNab06068, 4ug; Detection:FNab06068 1:300) with NIH/3T3 cells lysate 1600ug.



NIH/3T3 cells were subjected to SDS PAGE followed by western blot with FNab06068(P27; KIP1 Antibody) at dilution of 1:600