

anti- NY-ESO-1 antibody

Product Information

Catalog No.:	FNab05948
Size:	100µg
Form:	liquid
Purification:	Immunogen affinity purified
Purity:	≥95% as determined by SDS-PAGE
Host:	Rabbit
IsoType:	IgG
Storage:	PBS with 0.02% sodium azide and 50% glycerol pH 7.3 , -20°C for 12 months (Avoid repeated freeze / thaw cycles.)

Background

CTAG1A, also named as NY-ESO-1, CTAG, CTAG1, ESO1, LAGE2, LAGE2A, CTAG1B, LAGE2B and CT6.1, belongs to the CTAG family.

Immunogen information

Immunogen:	cancer/testis antigen 1A
Synonyms:	CTAG1A, NY-ESO-1, CTAG, CTAG1, ESO1, LAGE2, LAGE2A, CTAG1B, LAGE2B , CT6.1
Calculated MW:	23 kDa
Uniprot ID :	P78358

Application

Specificity:	Human
Tested Application:	ELISA, WB, IF, IP
Recommended dilution:	WB : 1:200-1:1000; IP : 1:200-1:2000; IF : 1:10-1:100
Image:	

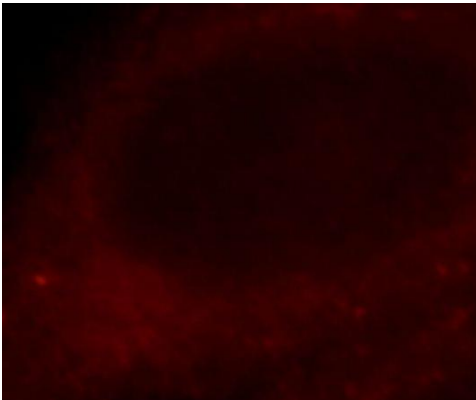
Wuhan Fine Biotech Co., Ltd.

B9 Bld, High-Tech Medical Devices Park, No. 818 Gaoxin Ave. East Lake High-Tech Development Zone. Wuhan, Hubei, China(430206)

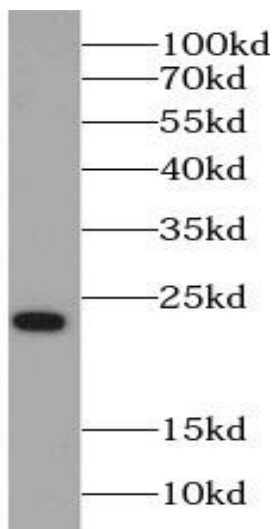
Tel : (0086)027-87384275

Fax: (0086)027-87800889

www.fn-test.com



Immunofluorescent analysis of HepG2 cells, using CTAG1A antibody FNab05948 at 1:30 dilution and Rhodamine-labeled goat anti-rabbit IgG (red).



HepG2 cells were subjected to SDS PAGE followed by western blot with FNab05948(CTAG1A antibody) at dilution of 1:100