

## anti- NSMCE2 antibody

### Product Information

Catalog No.:	FNab05869
Size:	100µg
Form:	liquid
Purification:	Immunogen affinity purified
Purity:	≥95% as determined by SDS-PAGE
Host:	Rabbit
Clonality:	polyclonal
Clone ID:	None
IsoType:	IgG
Storage:	PBS with 0.02% sodium azide and 50% glycerol pH 7.3, -20°C for 12 months (Avoid repeated freeze / thaw cycles.)

### Background

E3 SUMO-protein ligase component of the SMC5-SMC6 complex, a complex involved in DNA double-strand break repair by homologous recombination. Is not be required for the stability of the complex. The complex may promote sister chromatid homologous recombination by recruiting the SMC1-SMC3 cohesin complex to double-strand breaks. The complex is required for telomere maintenance via recombination in ALT(alternative lengthening of telomeres) cell lines and mediates sumoylation of shelterin complex(telosome) components which is proposed to lead to shelterin complex disassembly in ALT-associated PML bodies(APBs). Acts as a E3 ligase mediating SUMO attachment to various proteins such as SMC6L1 and TRAX, the shelterin complex subunits TERF1, TERF2, TIN2 and TERF2IP, and maybe the cohesin components RAD21 and STAG2. Required for recruitment of telomeres to PML nuclear bodies. SUMO protein-ligase activity is required for the prevention of DNA damage-induced apoptosis by facilitating DNA repair, and for formation of APBs in ALT cell lines. Required for sister chromatid cohesion during prometaphase and mitotic progression.

### Immunogen information

Immunogen:	non-SMC element 2, MMS21 homolog( <i>S. cerevisiae</i> )
Synonyms:	C8orf36, MMS21
Observed MW:	28 kDa

### Wuhan Fine Biotech Co., Ltd.

B9 Bld, High-Tech Medical Devices Park, No. 818 Gaoxin Ave. East Lake High-Tech Development Zone. Wuhan, Hubei, China(430206)

Tel : (0086)027-87384275

Fax: (0086)027-87800889

[www.fn-test.com](http://www.fn-test.com)

Uniprot ID : Q96MF7

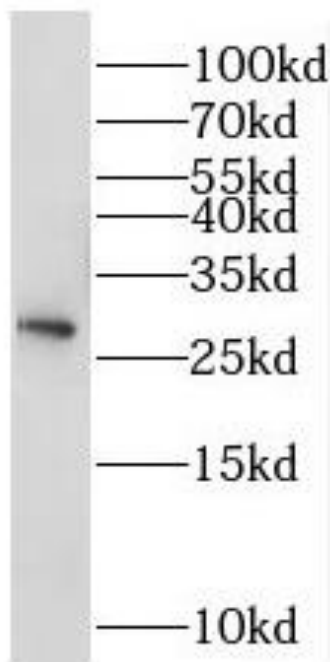
### Application

Reactivity: Human, Mouse, Rat

Tested Application: ELISA, WB

Recommended dilution: WB: 1:500-1:2000

Image:



HeLa cells were subjected to SDS PAGE followed by western blot with FNaB05869(NSMCE2 antibody) at dilution of 1:500

**Wuhan Fine Biotech Co., Ltd.**

B9 Bld, High-Tech Medical Devices Park, No. 818 Gaoxin Ave. East Lake High-Tech Development Zone. Wuhan, Hubei, China(430206)

Tel : (0086)027-87384275

Fax: (0086)027-87800889

[www.fn-test.com](http://www.fn-test.com)