

anti- NPFFR2 antibody

Product Information

| | |
|---------------|---|
| Catalog No.: | FNab05815 |
| Size: | 100µg |
| Form: | liquid |
| Purification: | Immunogen affinity purified |
| Purity: | ≥95% as determined by SDS-PAGE |
| Host: | Rabbit |
| Clonality: | polyclonal |
| Clone ID: | None |
| IsoType: | IgG |
| Storage: | PBS with 0.02% sodium azide and 50% glycerol pH 7.3, -20°C for 12 months (Avoid repeated freeze / thaw cycles.) |

Background

Receptor for NPAF(A-18-F-amide) and NPFF(F-8-F-amide) neuropeptides, also known as morphine-modulating peptides. Can also be activated by a variety of naturally occurring or synthetic FMRF-amide like ligands. This receptor mediates its action by association with G proteins that activate a phosphatidylinositol-calcium second messenger system.

Immunogen information

| | |
|--------------|----------------------------|
| Immunogen: | neuropeptide FF receptor 2 |
| Synonyms: | GPR74, NPFF2, NPGPR |
| Observed MW: | None |
| Uniprot ID : | Q9Y5X5 |

Application

| | |
|---------------------------|------------|
| Reactivity: | Human |
| Tested Application: | ELISA, IHC |
| Recommended dilution:IHC: | 1:20-1:200 |

Wuhan Fine Biotech Co., Ltd.

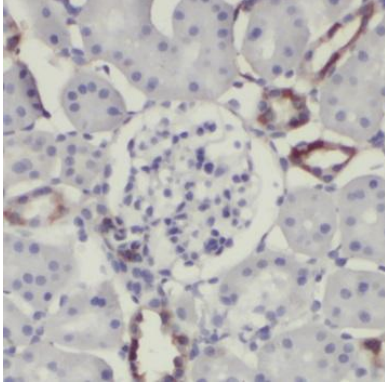
B9 Bld, High-Tech Medical Devices Park, No. 818 Gaoxin Ave. East Lake High-Tech Development Zone. Wuhan, Hubei, China(430206)

Tel : (0086)027-87384275

Fax: (0086)027-87800889

www.fn-test.com

Image:



Immunohistochemistry of paraffin-embedded human testis using FNab05815(NPFFR2 antibody) at dilution of 1:50