

anti- NFE2 antibody

Product Information

Catalog No.:	FNab05692
Size:	100µg
Form:	liquid
Purification:	Immunogen affinity purified
Purity:	≥95% as determined by SDS-PAGE
Host:	Rabbit
Clonality:	polyclonal
Clone ID:	None
IsoType:	IgG
Storage:	PBS with 0.02% sodium azide and 50% glycerol pH 7.3, -20°C for 12 months (Avoid repeated freeze / thaw cycles.)

Background

Component of the NF-E2 complex essential for regulating erythroid and megakaryocytic maturation and differentiation. Binds to the hypersensitive site 2(HS2) of the beta-globin control region(LCR). This subunit(NFE2) recognizes the TCAT/C sequence of the AP-1-like core palindrome present in a number of erythroid and megakaryocytic gene promoters. Requires MAFK or other small MAF proteins for binding to the NF-E2 motif. May play a role in all aspects of hemoglobin production from globin and heme synthesis to procurement of iron.

Immunogen information

Immunogen:	nuclear factor(erythroid-derived 2), 45kDa
Synonyms:	None
Observed MW:	45 kDa
UniprotID :	Q16621

Application

Reactivity:	Human
Tested Application:	ELISA, WB, IHC, IF, IP

Wuhan Fine Biotech Co., Ltd.

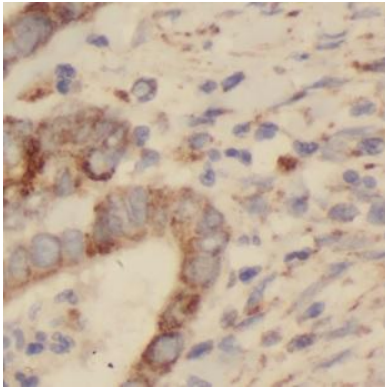
B9 Bld, High-Tech Medical Devices Park, No. 818 GaoxinAve. East Lake High-Tech Development Zone. Wuhan, Hubei, China(430206)

Tel : (0086)027-87384275

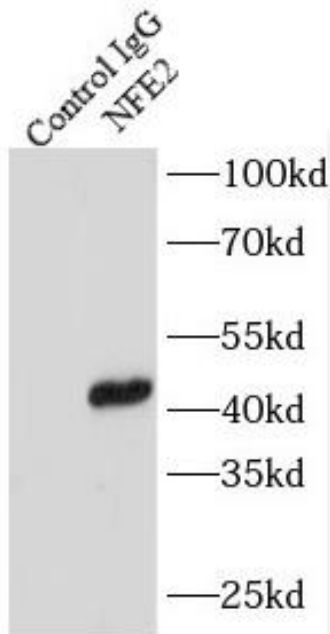
Fax: (0086)027-87800889 www.fn-test.com

Recommended dilution: WB: 1:500-1:2000; IP: 1:200-1:1000; IHC: 1:20-1:200; IF: 1:20-1:200

Image:



Immunohistochemistry of paraffin-embedded human colon cancer using FNab05692(NFE2 antibody) at dilution of 1:50



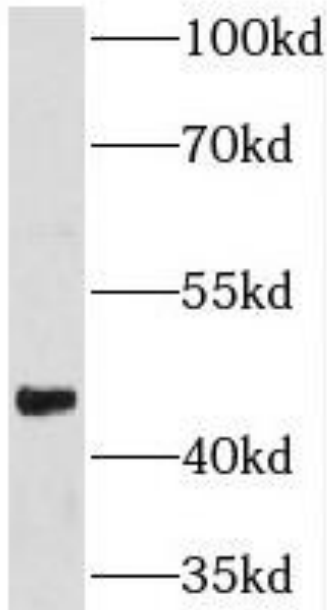
IP Result of anti-NFE2 (IP:FNab05692, 4ug; Detection:FNab05692 1:500) with K-562 cells lysate 3440ug.

Wuhan Fine Biotech Co., Ltd.

B9 Bld, High-Tech Medical Devices Park, No. 818 GaoxinAve.East Lake High-Tech Development Zone.Wuhan, Hubei, China(430206)

Tel : (0086)027-87384275

Fax: (0086)027-87800889 www.fn-test.com



K-562 cells were subjected to SDS PAGE followed by western blot with FNab05692(NFE2 antibody) at dilution of 1:500