

anti- MET antibody

Product Information

Catalog No.:	FNab05134
Size:	100µg
Form:	liquid
Purification:	Immunogen affinity purified
Purity:	≥95% as determined by SDS-PAGE
Host:	Rabbit
Clonality:	polyclonal
Clone ID:	None
IsoType:	IgG
Storage:	PBS with 0.02% sodium azide and 50% glycerol pH 7.3, -20°C for 12 months (Avoid repeated freeze / thaw cycles.)

Background

Receptor tyrosine kinase that transduces signals from the extracellular matrix into the cytoplasm by binding to hepatocyte growth factor/HGF ligand. Regulates many physiological processes including proliferation, scattering, morphogenesis and survival. Ligand binding at the cell surface induces autophosphorylation of MET on its intracellular domain that provides docking sites for downstream signaling molecules. Following activation by ligand, interacts with the PI3-kinase subunit PIK3R1, PLCG1, SRC, GRB2, STAT3 or the adapter GAB1. Recruitment of these downstream effectors by MET leads to the activation of several signaling cascades including the RAS-ERK, PI3 kinase-AKT, or PLCgamma-PKC. The RAS-ERK activation is associated with the morphogenetic effects while PI3K/AKT coordinates prosurvival effects. During embryonic development, MET signaling plays a role in gastrulation, development and migration of muscles and neuronal precursors, angiogenesis and kidney formation. In adults, participates in wound healing as well as organ regeneration and tissue remodeling. Promotes also differentiation and proliferation of hematopoietic cells. May regulate cortical bone osteogenesis (By similarity). Acts as a receptor for Listeria internalinIB, mediating entry of the pathogen into cells.

Immunogen information

Immunogen: met proto-oncogene (hepatocyte growth factor receptor)

Wuhan Fine Biotech Co., Ltd.

B9 Bld, High-Tech Medical Devices Park, No. 818 Gaoxin Ave. East Lake High-Tech Development Zone. Wuhan, Hubei, China (430206)

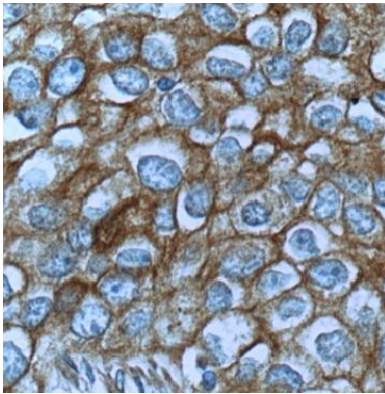
Tel : (0086)027-87384275

Fax: (0086)027-87800889 www.fn-test.com

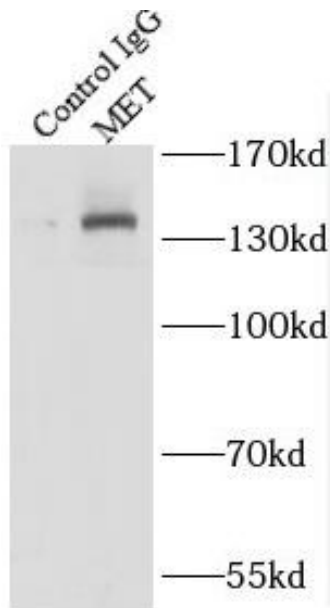
Synonyms: None
Observed MW: None
UniprotID : P08581

Application

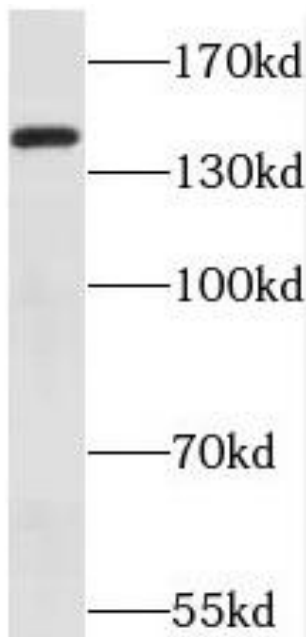
Reactivity: Human
Tested Application: ELISA, IHC, WB, IP
Recommended dilution: WB: 1:500-1:2000; IP: 1:200-1:1000; IHC: 1:20-1:200
Image:



Immunohistochemistry of paraffin-embedded human breast cancer using FNab05134(MET antibody) at dilution of 1:100



IP Result of anti-c-Met (Cytoplasmic)
(IP:FNab05134, 5ug; Detection:FNab05134 1:300)
with HeLa cells lysate 1600ug.



A431 cells were subjected to SDS PAGE followed
by western blot with FNab05134(MET antibody)
at dilution of 1:300