

anti- MESDC2 antibody

Product Information

Catalog No.:	FNab05130
Size:	100µg
Form:	liquid
Purification:	Immunogen affinity purified
Purity:	≥95% as determined by SDS-PAGE
Host:	Rabbit
Clonality:	polyclonal
Clone ID:	None
IsoType:	IgG
Storage:	PBS with 0.02% sodium azide and 50% glycerol pH 7.3, -20°C for 12 months (Avoid repeated freeze / thaw cycles.)

Background

Chaperone specifically assisting the folding of beta-propeller/EGF modules within the family of low-density lipoprotein receptors(LDLRs). Acts as a modulator of the Wnt pathway through chaperoning the coreceptors of the canonical Wnt pathway, LRP5 and LRP6, to the plasma membrane. Essential for specification of embryonic polarity and mesoderm induction.

Immunogen information

Immunogen:	mesoderm development candidate 2
Synonyms:	KIAA0081, MESD
Observed MW:	26-28 kDa
UniprotID :	Q14696

Application

Reactivity:	Human
Tested Application:	ELISA, WB
Recommended dilution:WB:	1:500-1:2000

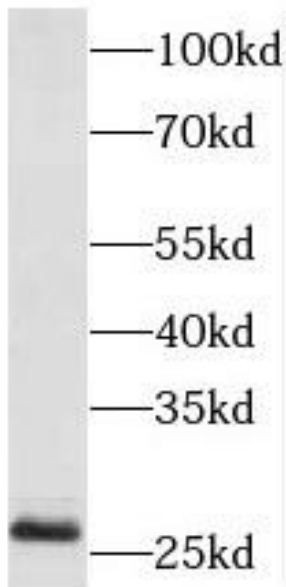
Wuhan Fine Biotech Co., Ltd.

B9 Bld, High-Tech Medical Devices Park, No. 818 GaoxinAve.East Lake High-Tech Development Zone.Wuhan, Hubei, China(430206)

Tel : (0086)027-87384275

Fax: (0086)027-87800889 www.fn-test.com

Image:



HEK-293 cells were subjected to SDS PAGE followed by western blot with FNab05130(MESDC2 antibody) at dilution of 1:800

Wuhan Fine Biotech Co., Ltd.

B9 Bld, High-Tech Medical Devices Park, No. 818 GaoxinAve.East Lake High-Tech Development Zone.Wuhan, Hubei, China(430206)

Tel : (0086)027-87384275

Fax: (0086)027-87800889 www.fn-test.com