

anti- MDH1 antibody

Product Information

Catalog No.:	FNab05073
Size:	100µg
Form:	liquid
Purification:	Immunogen affinity purified
Purity:	≥95% as determined by SDS-PAGE
Host:	Rabbit
Clonality:	polyclonal
Clone ID:	None
IsoType:	IgG
Storage:	PBS with 0.02% sodium azide and 50% glycerol pH 7.3, -20°C for 12 months (Avoid repeated freeze / thaw cycles.)

Immunogen information

Immunogen:	malate dehydrogenase 1, NAD(soluble)
Synonyms:	Cytosolic malate dehydrogenase, MDH s, MDH1, MDHA, MOR2
Observed MW:	36 kDa
Uniprot ID :	P40925

Application

Reactivity:	Human, Mouse, Rat
Tested Application:	ELISA, WB, IF, FC, IP
Recommended dilution:	WB: 1:500-1:3000; IP: 1:500-1:2000; IHC: 1:50-1:500; IF: 1:10-1:100
Image:	

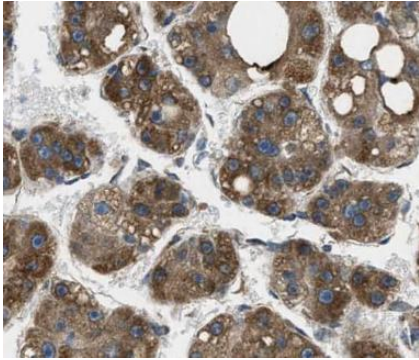
Wuhan Fine Biotech Co., Ltd.

B9 Bld, High-Tech Medical Devices Park, No. 818 Gaoxin Ave. East Lake High-Tech Development Zone. Wuhan, Hubei, China(430206)

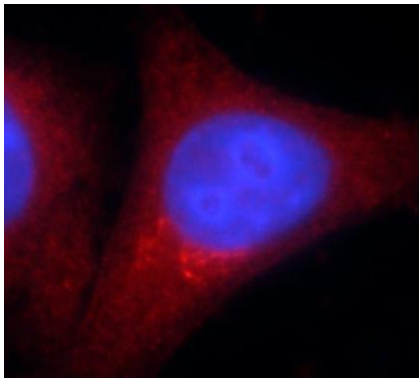
Tel : (0086)027-87384275

Fax: (0086)027-87800889

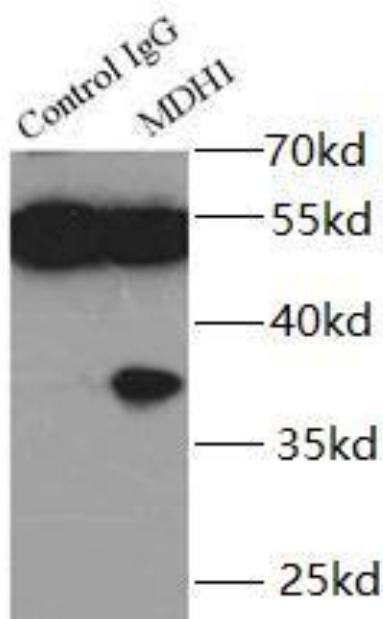
www.fn-test.com



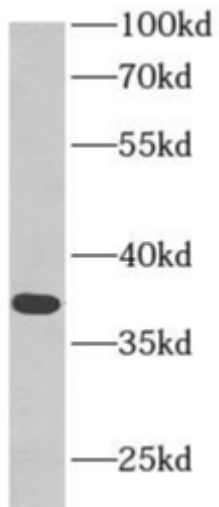
Immunohistochemistry of paraffin-embedded human liver cancer tissue slide using FNab05073(MDH1 Antibody) at dilution of 1:100



Immunofluorescent analysis of HepG2 cells, using MDH1 antibody FNab05073 at 1:25 dilution and Rhodamine-labeled goat anti-rabbit IgG (red).



IP Result of anti-MDH1 (IP: FNab05073, 4ug; Detection: FNab05073 1:800) with mouse liver tissue lysate 6400ug.



HepG2 cells were subjected to SDS PAGE followed by western blot with FNab05073(MDH1 antibody) at dilution of 1:500