

## anti- MAFB antibody

### Product Information

Catalog No.:	FNab04930
Size:	100µg
Form:	liquid
Purification:	Immunogen affinity purified
Purity:	≥95% as determined by SDS-PAGE
Host:	Rabbit
Clonality:	polyclonal
Clone ID:	None
IsoType:	IgG
Storage:	PBS with 0.02% sodium azide and 50% glycerol pH 7.3, -20°C for 12 months (Avoid repeated freeze / thaw cycles.)

### Background

Acts as a transcriptional activator or repressor. Plays a pivotal role in regulating lineage-specific hematopoiesis by repressing ETS1-mediated transcription of erythroid-specific genes in myeloid cells. Required for monocytic, macrophage, osteoclast, podocyte and islet beta cell differentiation. Involved in renal tubule survival and F4/80 maturation. Activates the insulin and glucagon promoters. Together with PAX6, transactivates weakly the glucagon gene promoter through the G1 element. SUMO modification controls its transcriptional activity and ability to specify macrophage fate. Binds element G1 on the glucagon promoter (By similarity). Involved either as an oncogene or as a tumor suppressor, depending on the cell context.

### Immunogen information

Immunogen:	v-mafmusculoaponeuroticfibrosarcoma oncogene homolog B(avian)
Synonyms:	KRML
Observed MW:	45 kDa
UniprotID :	Q9Y5Q3

### Application

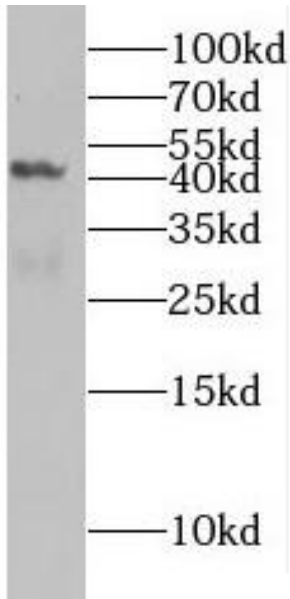
#### Wuhan Fine Biotech Co., Ltd.

B9 Bld, High-Tech Medical Devices Park, No. 818 Gaoxin Ave. East Lake High-Tech Development Zone. Wuhan, Hubei, China (430206)

Tel : (0086)027-87384275

Fax: (0086)027-87800889 [www.fn-test.com](http://www.fn-test.com)

Reactivity: Human, Rat  
Tested Application: ELISA, WB  
Recommended dilution: WB: 1:500-1:2000  
Image:



RAW 264.7 cells were subjected to SDS PAGE followed by western blot with FNab04930( MAFB Antibody) at dilution of 1:1000

**Wuhan Fine Biotech Co., Ltd.**

B9 Bld, High-Tech Medical Devices Park, No. 818 GaoxinAve. East Lake High-Tech Development Zone. Wuhan, Hubei, China(430206)

Tel : (0086)027-87384275

Fax: (0086)027-87800889 [www.fn-test.com](http://www.fn-test.com)