

## anti- LZTFL1 antibody

### Product Information

Catalog No.:	FNab04916
Size:	100µg
Form:	liquid
Purification:	Immunogen affinity purified
Purity:	≥95% as determined by SDS-PAGE
Host:	Rabbit
Clonality:	polyclonal
Clone ID:	None
IsoType:	IgG
Storage:	PBS with 0.02% sodium azide and 50% glycerol pH 7.3, -20°C for 12 months (Avoid repeated freeze / thaw cycles.)

### Background

Regulates ciliary localization of the BBSome complex. Together with the BBSome complex, controls SMO ciliary trafficking and contributes to the sonic hedgehog(SHH) pathway regulation. May play a role in neurite outgrowth. May have tumor suppressor function.

### Immunogen information

Immunogen:	leucine zipper transcription factor-like 1
Synonyms:	None
Observed MW:	35 kDa
UniprotID :	Q9NQ48

### Application

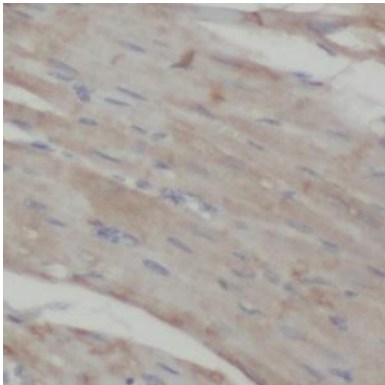
Reactivity:	Human, Mouse, Rat
Tested Application:	ELISA, WB, IHC
Recommended dilution:	WB: 1:500-1:2000; IHC: 1:20-1:200
Image:	

### Wuhan Fine Biotech Co., Ltd.

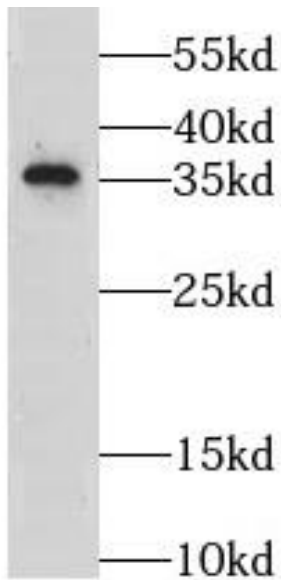
B9 Bld, High-Tech Medical Devices Park, No. 818 GaoxinAve. East Lake High-Tech Development Zone. Wuhan, Hubei, China(430206)

Tel : (0086)027-87384275

Fax: (0086)027-87800889 [www.fn-test.com](http://www.fn-test.com)



Immunohistochemistry of paraffin-embedded human heart tissue slide using FNab04916(LZTFL1 Antibody) at dilution of 1:50



human testis tissue were subjected to SDS PAGE followed by western blot with FNab04916(LZTFL1 antibody) at dilution of 1:500