

## anti- LSG1 antibody

### Product Information

Catalog No.:	FNab04869
Size:	100µg
Form:	liquid
Purification:	Immunogen affinity purified
Purity:	≥95% as determined by SDS-PAGE
Host:	Rabbit
Clonality:	polyclonal
Clone ID:	None
IsoType:	IgG
Storage:	PBS with 0.02% sodium azide and 50% glycerol pH 7.3, -20°C for 12 months (Avoid repeated freeze / thaw cycles.)

### Background

GTPase required for the XPO1/CRM1-mediated nuclear export of the 60S ribosomal subunit. Probably acts by mediating the release of NMD3 from the 60S ribosomal subunit after export into the cytoplasm(Probable).

### Immunogen information

Immunogen:	large subunit GTPase 1 homolog(S. cerevisiae)
Synonyms:	None
Observed MW:	75 kDa
Uniprot ID :	Q9H089

### Application

Reactivity:	Human, Mouse, Rat
Tested Application:	ELISA, WB, IHC
Recommended dilution:	WB: 1:500-1:2000; IHC: 1:20-1:200
Image:	

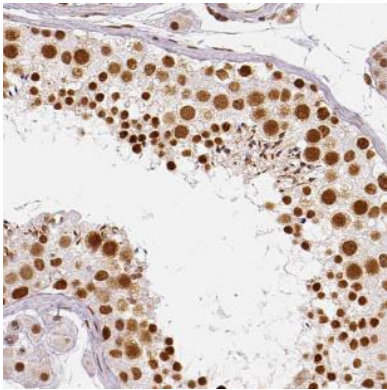
### Wuhan Fine Biotech Co., Ltd.

B9 Bld, High-Tech Medical Devices Park, No. 818 Gaoxin Ave. East Lake High-Tech Development Zone. Wuhan, Hubei, China(430206)

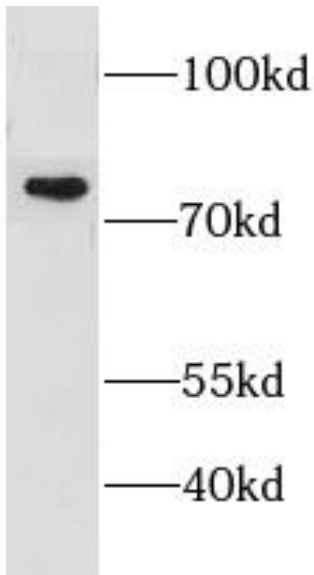
Tel : (0086)027-87384275

Fax: (0086)027-87800889

[www.fn-test.com](http://www.fn-test.com)



Immunohistochemistry of paraffin-embedded human testis using FNab04869(LSG1 antibody) at dilution of 1:50



HeLa cells were subjected to SDS PAGE followed by western blot with FNab04869(LSG1 antibody) at dilution of 1:500