

anti- LRWD1 antibody

Product Information

Catalog No.:	FNab04867
Size:	100µg
Form:	liquid
Purification:	Immunogen affinity purified
Purity:	≥95% as determined by SDS-PAGE
Host:	Rabbit
Clonality:	polyclonal
Clone ID:	None
IsoType:	IgG
Storage:	PBS with 0.02% sodium azide and 50% glycerol pH 7.3, -20°C for 12 months (Avoid repeated freeze / thaw cycles.)

Background

Required for G1/S transition. Recruits and stabilizes the origin recognition complex(ORC) onto chromatin during G1 to establish pre-replication complex(preRC) and to heterochromatic sites in post-replicated cells. Binds a combination of DNA and histone methylation repressive marks on heterochromatin. Binds histone H3 and H4 trimethylation marks H3K9me3, H3K20me3 and H4K27me3 in a cooperative manner with DNA methylation. Required for silencing of major satellite repeats. May be important ORC2, ORC3 and ORC4 stability.

Immunogen information

Immunogen:	leucine-rich repeats and WD repeat domain containing 1
Synonyms:	CENP-33, ORCA
Observed MW:	85 kDa
UniprotID :	Q9UFC0

Application

Reactivity:	Human
Tested Application:	ELISA, WB

Wuhan Fine Biotech Co., Ltd.

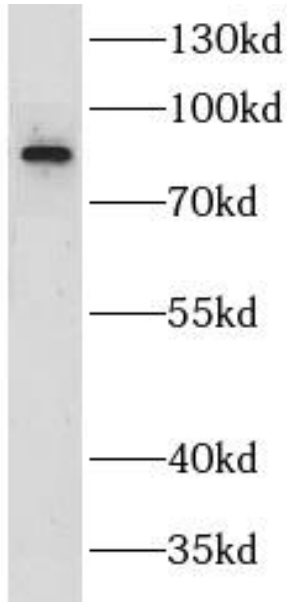
B9 Bld, High-Tech Medical Devices Park, No. 818 Gaoxin Ave. East Lake High-Tech Development Zone. Wuhan, Hubei, China(430206)

Tel : (0086)027-87384275

Fax: (0086)027-87800889 www.fn-test.com

Recommended dilution: WB: 1:500-1:2000

Image:



human testis tissue were subjected to SDS PAGE followed by western blot with FNab04867(LRWD1 antibody) at dilution of 1:100

Wuhan Fine Biotech Co., Ltd.

B9 Bld, High-Tech Medical Devices Park, No. 818 GaoxinAve. East Lake High-Tech Development Zone. Wuhan, Hubei, China(430206)

Tel : (0086)027-87384275

Fax: (0086)027-87800889 www.fn-test.com