

anti- LRDD antibody

Product Information

Catalog No.:	FNab04842
Size:	100µg
Form:	liquid
Purification:	Immunogen affinity purified
Purity:	≥95% as determined by SDS-PAGE
Host:	Rabbit
Clonality:	polyclonal
Clone ID:	None
IsoType:	IgG
Storage:	PBS with 0.02% sodium azide and 50% glycerol pH 7.3, -20°C for 12 months (Avoid repeated freeze / thaw cycles.)

Background

None

Immunogen information

Immunogen:	leucine-rich repeats and death domain containing
Synonyms:	None
Observed MW:	55 kDa
UniprotID :	Q9HB75

Application

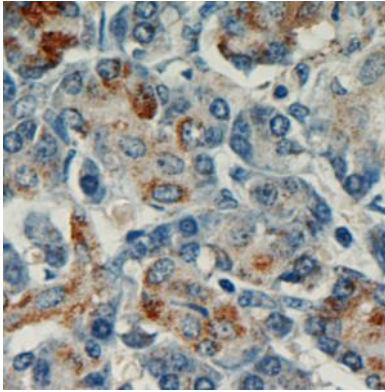
Reactivity:	Human, Mouse, Rat
Tested Application:	ELISA, IF, IP, WB, IHC
Recommended dilution:	WB: 1:500-1:2000; IP: 1:200-1:2000; IHC: 1:20-1:200; IF: 1:20-1:200
Image:	

Wuhan Fine Biotech Co., Ltd.

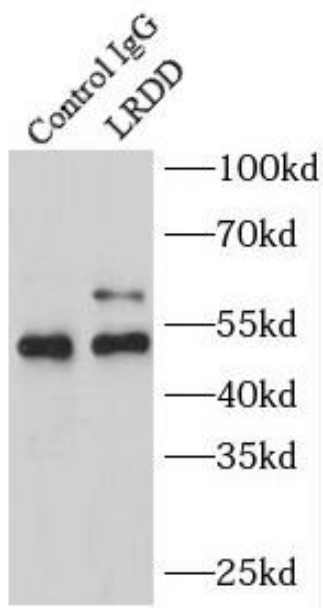
B9 Bld, High-Tech Medical Devices Park, No. 818 GaoxinAve. East Lake High-Tech Development Zone. Wuhan, Hubei, China(430206)

Tel : (0086)027-87384275

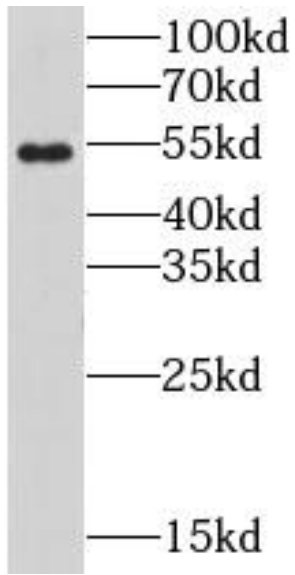
Fax: (0086)027-87800889 www.fn-test.com



Immunohistochemistry of paraffin-embedded human pancreas using FNab04842(LRDD antibody) at dilution of 1:50



IP Result of anti-LRDD (IP:FNab04842, 4ug;
Detection:FNab04842 1:500) with L02 cells lysate
2800ug.



L02 cells were subjected to SDS PAGE followed by western blot with FNab04842(LRDD antibody) at dilution of 1:300