

anti- LRCH3 antibody

Product Information

| | |
|---------------|---|
| Catalog No.: | FNab04841 |
| Size: | 100µg |
| Form: | liquid |
| Purification: | Immunogen affinity purified |
| Purity: | ≥95% as determined by SDS-PAGE |
| Host: | Rabbit |
| Clonality: | polyclonal |
| Clone ID: | None |
| IsoType: | IgG |
| Storage: | PBS with 0.02% sodium azide and 50% glycerol pH 7.3, -20°C for 12 months (Avoid repeated freeze / thaw cycles.) |

Background

None

Immunogen information

| | |
|--------------|--|
| Immunogen: | leucine-rich repeats and calponin homology(CH) domain containing 3 |
| Synonyms: | None |
| Observed MW: | 70 kDa |
| UniprotID : | Q96II8 |

Application

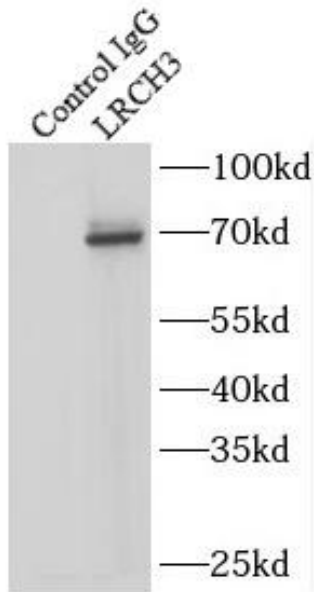
| | |
|-----------------------|--|
| Reactivity: | Human, Mouse, Rat |
| Tested Application: | ELISA, WB, IP, IF |
| Recommended dilution: | WB: 1:500-1:2000; IP: 1:200-1:1000; IF: 1:20-1:200 |
| Image: | |

Wuhan Fine Biotech Co., Ltd.

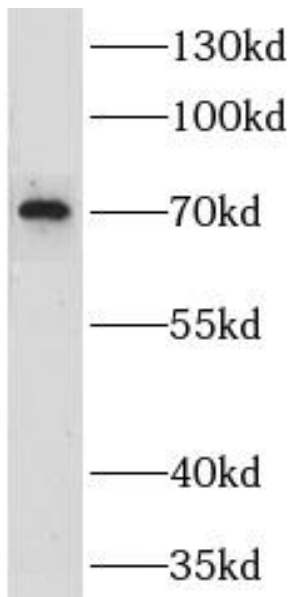
B9 Bld, High-Tech Medical Devices Park, No. 818 Gaoxin Ave. East Lake High-Tech Development Zone. Wuhan, Hubei, China (430206)

Tel : (0086)027-87384275

Fax: (0086)027-87800889 www.fn-test.com



IP Result of anti-LRCH3 (IP:FNab04841, 3ug;
Detection:FNab04841 1:1000) with mouse liver
tissue lysate 12500ug.



human liver tissue were subjected to SDS PAGE
followed by western blot with FNab04841(LRCH3
antibody) at dilution of 1:800