

anti- LRCH2 antibody

Product Information

Catalog No.:	FNab04840
Size:	100µg
Form:	liquid
Purification:	Immunogen affinity purified
Purity:	≥95% as determined by SDS-PAGE
Host:	Rabbit
Clonality:	polyclonal
Clone ID:	None
IsoType:	IgG
Storage:	PBS with 0.02% sodium azide and 50% glycerol pH 7.3, -20°C for 12 months (Avoid repeated freeze / thaw cycles.)

Background

None

Immunogen information

Immunogen:	leucine-rich repeats and calponin homology(CH) domain containing 2
Synonyms:	KIAA1495
Observed MW:	84 kDa
Uniprot ID :	Q5VUJ6

Application

Reactivity:	Human, Mouse
Tested Application:	ELISA, WB, IHC
Recommended dilution:	WB: 1:500-1:2000; IHC: 1:20-1:200
Image:	

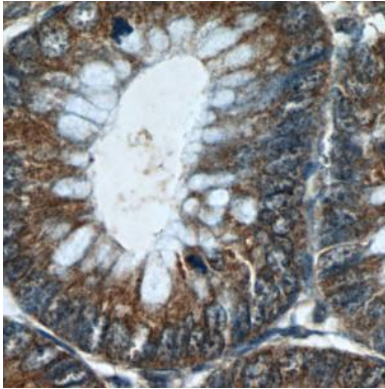
Wuhan Fine Biotech Co., Ltd.

B9 Bld, High-Tech Medical Devices Park, No. 818 Gaoxin Ave. East Lake High-Tech Development Zone. Wuhan, Hubei, China(430206)

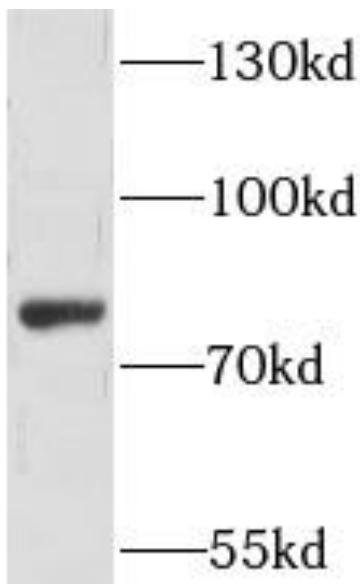
Tel : (0086)027-87384275

Fax: (0086)027-87800889

www.fn-test.com



Immunohistochemistry of paraffin-embedded human colon tissue slide using FNab04840(LRCH2 Antibody) at dilution of 1:50



mouse brain tissue were subjected to SDS PAGE followed by western blot with FNab04840(LRCH2 Antibody) at dilution of 1:1500