

anti- Lin28B-specific antibody

Product Information

Catalog No.:	FNab04786
Size:	100µg
Form:	liquid
Purification:	Immunogen affinity purified
Purity:	≥95% as determined by SDS-PAGE
Host:	Rabbit
Clonality:	polyclonal
IsoType:	IgG
Storage:	PBS with 0.02% sodium azide and 50% glycerol pH 7.3 , -20°C for 24 months (Avoid repeated freeze / thaw cycles.)

Background

LIN28B, also named as CSDD2, belongs to the lin-28 family. Acts as a suppressor of microRNA(miRNA) biogenesis by specifically binding the precursor let-7(pre-let-7), a miRNA precursor. Lin2B is stage-specifically expressed in embryonic muscle, neurons, and epithelia, as well as in embryonic carcinoma cells; however, it is suppressed in most adult tissues except for skeletal and cardiac muscle. Lin28B shares 78% sequence identity with LIN28A, with some unknown functions. This antibody is specific to LIN28B.

Immunogen information

Immunogen:	lin-28 homolog B(C. elegans)
Synonyms:	CSDD2, FLJ16517, lin 28 homolog B(C. elegans), Lin 28B, Lin28, LIN28B, Protein lin 28 homolog B
Observed MW:	
Uniprot ID :	Q6ZN17

Application

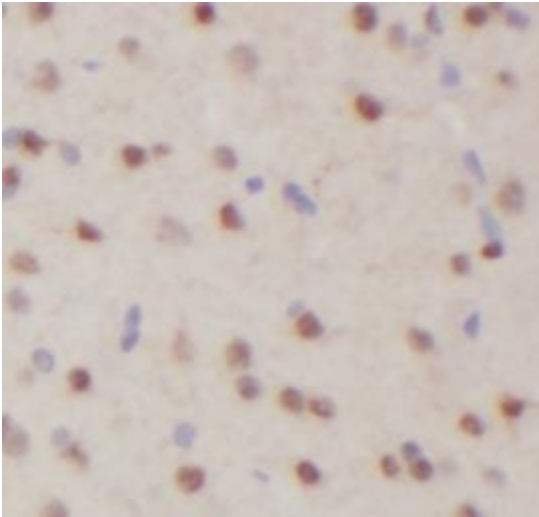
Reactivity:	Human, Mouse, Rat
Tested Application:	ELISA, IHC, IF, WB

Wuhan Fine Biotech Co., Ltd.

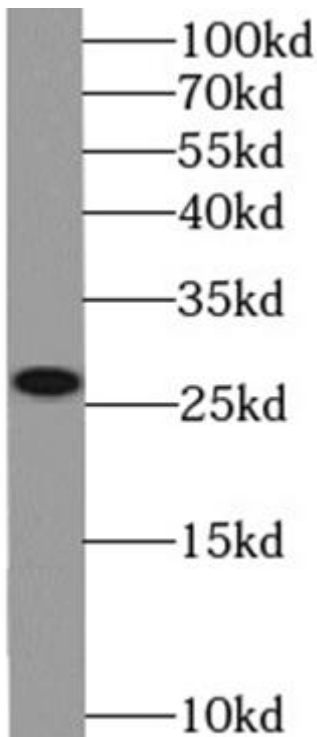
B9 Bld, High-Tech Medical Devices Park, No. 818 Gaoxin Ave. East Lake High-Tech Development Zone. Wuhan, Hubei, China(430206)

Recommended dilution: WB: 1:500-1:5000; IHC: 1:20-1:200; IF: 1:10-1:100

Image:



Immunohistochemistry of paraffin-embedded human brain using FNab04786(Lin28B-specific antibody) at dilution of 1:50



Transfected HEK-293 cells were subjected to SDS PAGE followed by western blot with FNab04786(Lin28B-specific Antibody) at dilution of 1:1000

Wuhan Fine Biotech Co., Ltd.

B9 Bld, High-Tech Medical Devices Park, No. 818 Gaoxin Ave. East Lake High-Tech Development Zone. Wuhan, Hubei, China(430206)

Tel : (0086)027-87384275

Fax: (0086)027-87800889

www.fn-test.com