

anti- LBR antibody

Product Information

| | |
|---------------|---|
| Catalog No.: | FNab04715 |
| Size: | 100µg |
| Form: | liquid |
| Purification: | Immunogen affinity purified |
| Purity: | ≥95% as determined by SDS-PAGE |
| Host: | Rabbit |
| Clonality: | polyclonal |
| Clone ID: | None |
| IsoType: | IgG |
| Storage: | PBS with 0.02% sodium azide and 50% glycerol pH 7.3, -20°C for 12 months (Avoid repeated freeze / thaw cycles.) |

Background

Anchors the lamina and the heterochromatin to the inner nuclear membrane.

Immunogen information

| | |
|--------------|------------------|
| Immunogen: | lamin B receptor |
| Synonyms: | None |
| Observed MW: | 58 kDa |
| UniprotID : | Q14739 |

Application

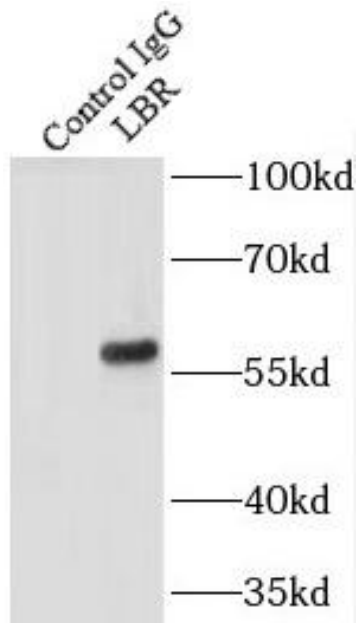
| | |
|-----------------------|--|
| Reactivity: | Human, Mouse, Rat |
| Tested Application: | ELISA, WB, IF, IP |
| Recommended dilution: | WB: 1:500-1:2000; IP: 1:200-1:1000; IF: 1:20-1:200 |
| Image: | |

Wuhan Fine Biotech Co., Ltd.

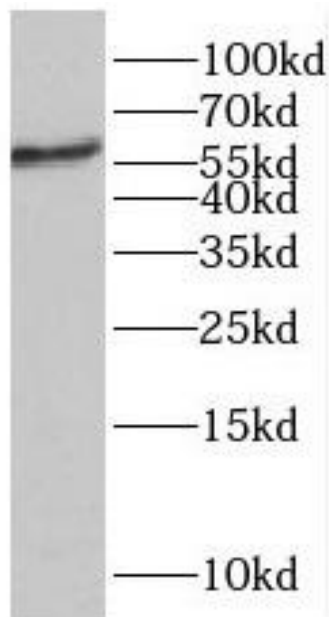
B9 Bld, High-Tech Medical Devices Park, No. 818 GaoxinAve. East Lake High-Tech Development Zone. Wuhan, Hubei, China(430206)

Tel : (0086)027-87384275

Fax: (0086)027-87800889 www.fn-test.com



IP Result of anti-LBR (IP:FNab04715, 3ug;
Detection:FNab04715 1:500) with A375 cells
lysate 3200ug.



A375 cells were subjected to SDS PAGE followed
by western blot with FNab04715(LBR antibody) at
dilution of 1:500