

---

## anti- LACTB antibody

### Product Information

Catalog No.:	FNab04672
Size:	100µg
Form:	liquid
Purification:	Immunogen affinity purified
Purity:	≥95% as determined by SDS-PAGE
Host:	Rabbit
Clonality:	polyclonal
Clone ID:	None
IsoType:	IgG
Storage:	PBS with 0.02% sodium azide and 50% glycerol pH 7.3, -20°C for 12 months (Avoid repeated freeze / thaw cycles.)

### Immunogen information

Immunogen:	lactamase, beta
Synonyms:	G24, lactamase, beta, LACTB, MRPL56
Observed MW:	50 kDa
Uniprot ID :	P83111

### Application

Reactivity:	Human, Mouse, Rat
Tested Application:	ELISA, WB, IHC, IF
Recommended dilution:	WB: 1:1000-1:4000; IHC: 1:50-1:500; IF: 1:50-1:500
Image:	

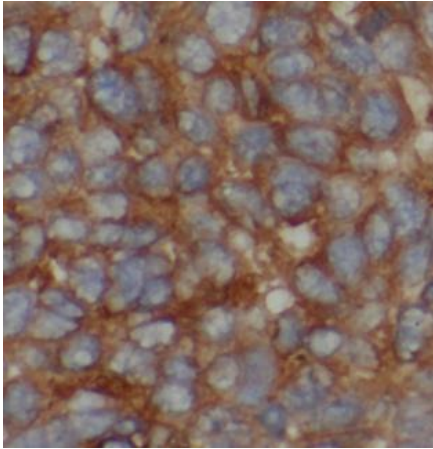
### Wuhan Fine Biotech Co., Ltd.

B9 Bld, High-Tech Medical Devices Park, No. 818 Gaoxin Ave. East Lake High-Tech Development Zone. Wuhan, Hubei, China(430206)

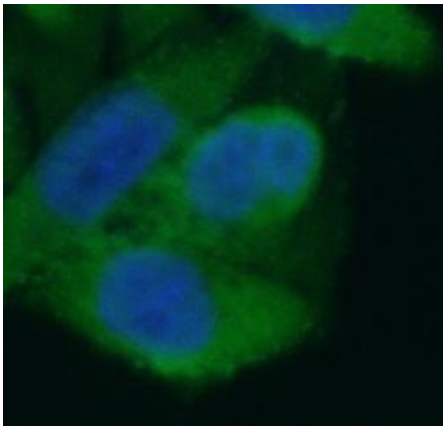
Tel : (0086)027-87384275

Fax: (0086)027-87800889

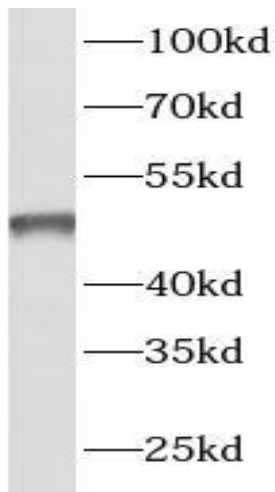
[www.fn-test.com](http://www.fn-test.com)



Immunohistochemistry of paraffin-embedded human liver cancer using FNab04672(LACTB antibody) at dilution of 1:200



Immunofluorescent analysis of ( 4% PFA ) fixed HeLa cells using FNab04672 (LACTB antibody) at dilution of 1:50 and Alexa Fluor 488-conjugated Goat Anti-Rabbit IgG(H+L)



Hela cells were subjected to SDS PAGE followed by western blot with FNab04672(LACTB antibody) at dilution of 1:2000