

## anti- KTELC1 antibody

### Product Information

Catalog No.:	FNab04659
Size:	100µg
Form:	liquid
Purification:	Immunogen affinity purified
Purity:	≥95% as determined by SDS-PAGE
Host:	Rabbit
Clonality:	polyclonal
Clone ID:	None
IsoType:	IgG
Storage:	PBS with 0.02% sodium azide and 50% glycerol pH 7.3, -20°C for 12 months (Avoid repeated freeze / thaw cycles.)

### Background

None

### Immunogen information

Immunogen:	KTEL(Lys-Tyr-Glu-Leu) containing 1
Synonyms:	None
Observed MW:	65 kDa
UniprotID :	Q8NBL1

### Application

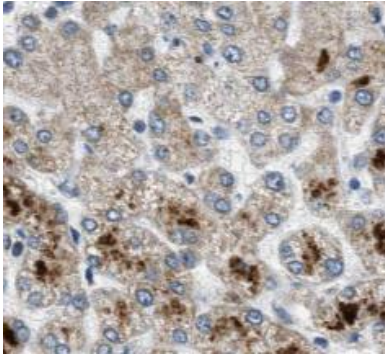
Reactivity:	Human
Tested Application:	ELISA, WB, IF, IHC
Recommended dilution:	WB: 1:500 - 1:1000; IHC: 1:20 - 1:200; IF: 1:10 - 1:100
Image:	

### Wuhan Fine Biotech Co., Ltd.

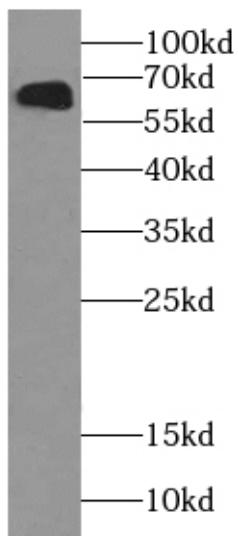
B9 Bld, High-Tech Medical Devices Park, No. 818 GaoxinAve.East Lake High-Tech Development Zone.Wuhan, Hubei, China(430206)

Tel :( 0086)027-87384275

Fax: (0086)027-87800889 [www.fn-test.com](http://www.fn-test.com)



Immunohistochemistry of paraffin-embedded human liver tissue slide using FNab04659(KTELC1 Antibody) at dilution of 1:50



HepG2 cells were subjected to SDS PAGE followed by western blot with FNab04659(KTELC1 Antibody) at dilution of 1:600