

anti- KLRG1 antibody

Product Information

Catalog No.:	FNab04633
Size:	100µg
Form:	liquid
Purification:	Immunogen affinity purified
Purity:	≥95% as determined by SDS-PAGE
Host:	Rabbit
Clonality:	polyclonal
IsoType:	IgG
Storage:	PBS with 0.02% sodium azide and 50% glycerol pH 7.3, -20°C for 12 months (Avoid repeated freeze / thaw cycles.)

Background

Plays an inhibitory role on natural killer(NK) cells and T-cell functions upon binding to their non-MHC ligands. May mediate missing self recognition by binding to a highly conserved site on classical cadherins, enabling it to monitor expression of E-cadherin/CDH1, N-cadherin/CDH2 and R-cadherin/CDH4 on target cells.

Immunogen information

Immunogen:	killer cell lectin-like receptor subfamily G, member 1
Synonyms:	CLEC15A, MAFA, MAFAL
Observed MW:	60 kDa
Uniprot ID :	Q96E93

Application

Reactivity:	Human, Mouse
Tested Application:	ELISA, WB, IHC
Recommended dilution:	WB: 1:500-1:2000; IHC: 1:20-1:200
Image:	

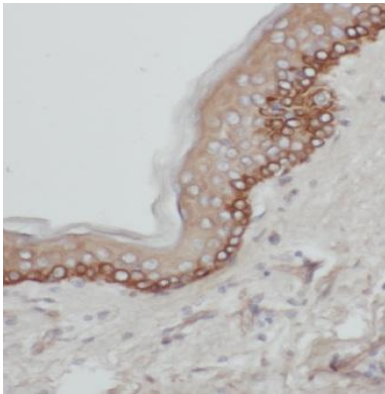
Wuhan Fine Biotech Co., Ltd.

B9 Bld, High-Tech Medical Devices Park, No. 818 Gaoxin Ave. East Lake High-Tech Development Zone. Wuhan, Hubei, China(430206)

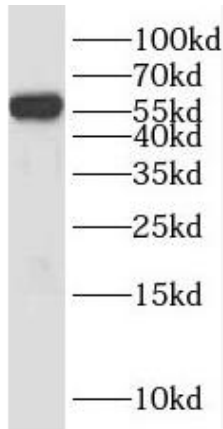
Tel : (0086)027-87384275

Fax: (0086)027-87800889

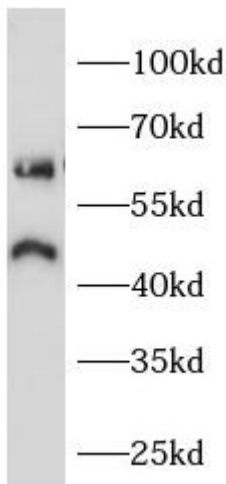
www.fn-test.com



Immunohistochemistry of paraffin-embedded human breast cancer using FNab04633(KLRG1 antibody) at dilution of 1:50



Human peripheral blood leukocyte were subjected to SDS PAGE followed by western blot with FNab04633(KLRG1 antibody) at dilution of 1:200



Mouse spleen were subjected to SDS PAGE followed by western blot with FNab04633(KLRG1 antibody) at dilution of 1:1000