

anti- PSA antibody

Product Information

Catalog No.:	FNab04630
Size:	100µg
Form:	liquid
Purification:	Protein A+G purification
Purity:	≥95% as determined by SDS-PAGE
Host:	Mouse
Clonality:	monoclonal
Clone ID:	1G1
IsoType:	IgG2a
Storage:	PBS with 0.02% sodium azide and 50% glycerol pH 7.3 , -20°C for 24 months (Avoid repeated freeze / thaw cycles.)

Immunogen information

Immunogen:	kallikrein-related peptidase 3
Synonyms:	APS, Gamma seminoprotein, hK3, Kallikrein 3, kallikrein related peptidase 3, KLK2A1, KLK3, KLK3,PSA, P 30 antigen, Prostate specific antigen, PSA, Semenogelase, Seminin
Observed MW:	30-34 kDa
Uniprot ID :	P07288

Application

Reactivity:	Human
Tested Application:	ELISA, IHC, WB
Recommended dilution:	WB : 1:200-1:2000; IHC: 1:1000-1:5000
Image:	

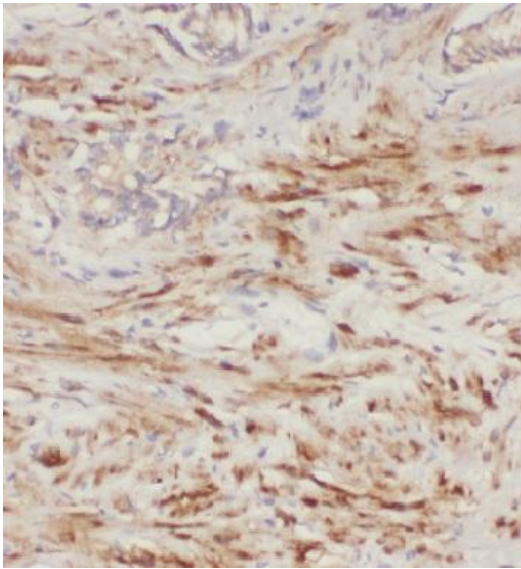
Wuhan Fine Biotech Co., Ltd.

B9 Bld, High-Tech Medical Devices Park, No. 818 Gaoxin Ave. East Lake High-Tech Development Zone. Wuhan, Hubei, China(430206)

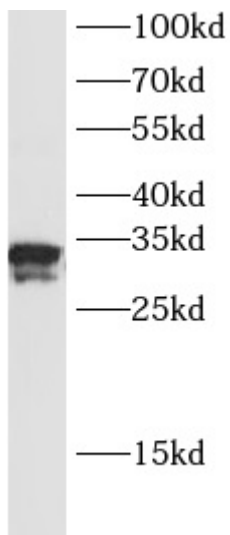
Tel : (0086)027-87384275

Fax: (0086)027-87800889

www.fn-test.com



Immunohistochemistry of paraffin-embedded human prostate cancer using FNab04630(KLK3,PSA antibody) at dilution of 1:200



LNCaP cells were subjected to SDS PAGE followed by western blot with FNab04630(PSA Antibody) at dilution of 1:1000