

anti- KLHL31 antibody

Product Information

Catalog No.:	FNab04624
Size:	100µg
Form:	liquid
Purification:	Immunogen affinity purified
Purity:	≥95% as determined by SDS-PAGE
Host:	Rabbit
Clonality:	polyclonal
Clone ID:	None
IsoType:	IgG
Storage:	PBS with 0.02% sodium azide and 50% glycerol pH 7.3, -20°C for 12 months (Avoid repeated freeze / thaw cycles.)

Background

Transcriptional repressor in MAPK/JNK signaling pathway to regulate cellular functions. Overexpression inhibits the transcriptional activities of both the TPA-response element(TRE) and serum response element(SRE).

Immunogen information

Immunogen:	kelch-like 31(Drosophila)
Synonyms:	BKLHD6, KBTBD1, KLHL
Observed MW:	60 kDa
UniprotID :	Q9H511

Application

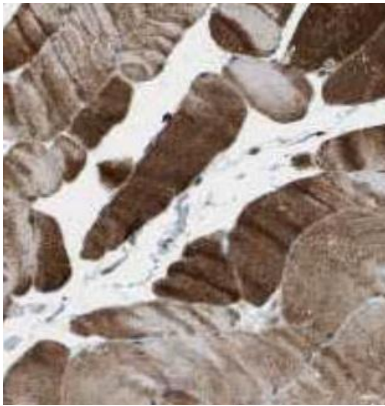
Reactivity:	Human, Mouse
Tested Application:	ELISA, WB, IHC, IF
Recommended dilution:	WB: 1:500-1:2000; IHC: 1:20-1:200; IF: 1:20-1:200
Image:	

Wuhan Fine Biotech Co., Ltd.

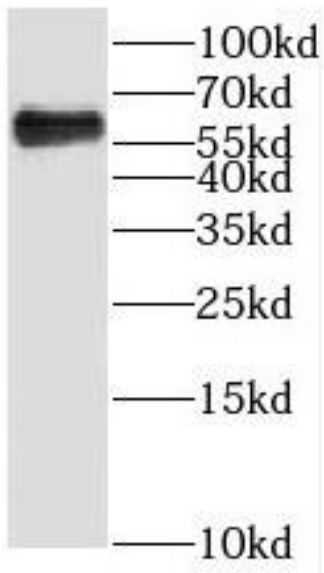
B9 Bld, High-Tech Medical Devices Park, No. 818 GaoxinAve.East Lake High-Tech Development Zone.Wuhan, Hubei, China(430206)

Tel :(0086)027-87384275

Fax: (0086)027-87800889 www.fn-test.com



Immunohistochemistry of paraffin-embedded human skeletal muscle tissue slide using FNab04624(KLHL31 Antibody) at dilution of 1:50



mouse embryo tissue were subjected to SDS PAGE followed by western blot with FNab04624(KLHL31 Antibody) at dilution of 1:1000