

anti- KLHL21 antibody

Product Information

Catalog No.:	FNab04619
Size:	100µg
Form:	liquid
Purification:	Immunogen affinity purified
Purity:	≥95% as determined by SDS-PAGE
Host:	Rabbit
Clonality:	polyclonal
Clone ID:	None
IsoType:	IgG
Storage:	PBS with 0.02% sodium azide and 50% glycerol pH 7.3, -20°C for 12 months (Avoid repeated freeze / thaw cycles.)

Background

Substrate-specific adapter of a BCR(BTB-CUL3-RBX1) E3 ubiquitin-protein ligase complex required for efficient chromosome alignment and cytokinesis. The BCR(KLHL21) E3 ubiquitin ligase complex regulates localization of the chromosomal passenger complex(CPC) from chromosomes to the spindle midzone in anaphase and mediates the ubiquitination of AURKB. Ubiquitination of AURKB by BCR(KLHL21) E3 ubiquitin ligase complex may not lead to its degradation by the proteasome.

Immunogen information

Immunogen:	kelch-like 21(Drosophila)
Synonyms:	KIAA0469
Observed MW:	67kd
UniprotID :	Q9UJP4

Application

Reactivity:	Human, Mouse, Rat
Tested Application:	ELISA, WB, IHC, IP

Wuhan Fine Biotech Co., Ltd.

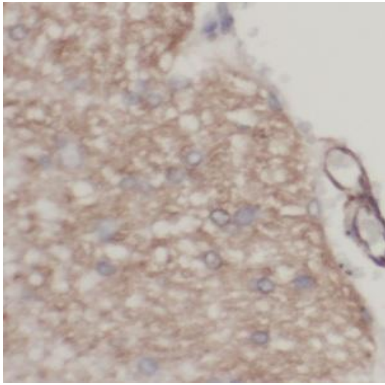
B9 Bld, High-Tech Medical Devices Park, No. 818 GaoxinAve.East Lake High-Tech Development Zone.Wuhan, Hubei, China(430206)

Tel :(0086)027-87384275

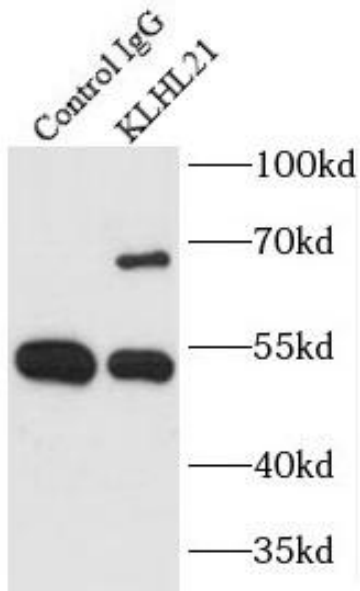
Fax: (0086)027-87800889 www.fn-test.com

Recommended dilution: WB: 1:500-1:2000; IP: 1:200-1:1000; IHC: 1:20-1:200

Image:



Immunohistochemistry of paraffin-embedded human liver cancer tissue slide using FNab04619(KLHL21 Antibody) at dilution of 1:50



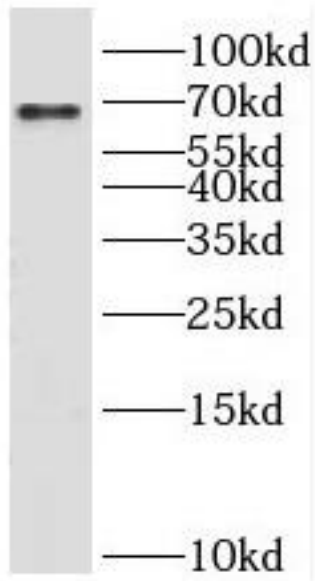
IP Result of anti-KLHL21 (IP:FNab04619, 3ug; Detection:FNab04619 1:300) with HeLa cells lysate 1800ug.

Wuhan Fine Biotech Co., Ltd.

B9 Bld, High-Tech Medical Devices Park, No. 818 GaoxinAve. East Lake High-Tech Development Zone. Wuhan, Hubei, China(430206)

Tel : (0086)027-87384275

Fax: (0086)027-87800889 www.fn-test.com



A431 cells were subjected to SDS PAGE followed by western blot with FNab04619(KLHL21 antibody) at dilution of 1:400