

## anti- KLF6 antibody

### Product Information

Catalog No.:	FNab04604
Size:	100µg
Form:	liquid
Purification:	Immunogen affinity purified
Purity:	≥95% as determined by SDS-PAGE
Host:	Rabbit
Clonality:	polyclonal
Clone ID:	None
IsoType:	IgG
Storage:	PBS with 0.02% sodium azide and 50% glycerol pH 7.3, -20°C for 12 months (Avoid repeated freeze / thaw cycles.)

### Background

Transcriptional activator(By similarity). Binds a GC box motif.Could play a role in B-cell growth and development.

### Immunogen information

Immunogen:	Kruppel-like factor 6
Synonyms:	BCD1, COPEB, CPBP, ST12
Observed MW:	42-45kd
UniprotID :	Q99612

### Application

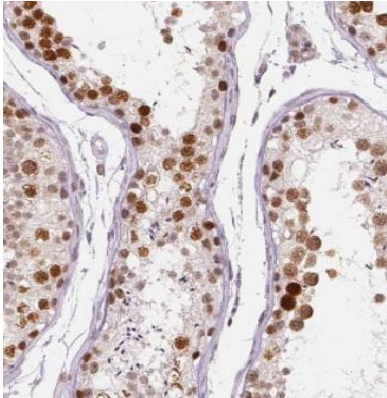
Reactivity:	Human, Mouse, Rat
Tested Application:	ELISA, WB, IHC
Recommended dilution:	WB: 1:500-1:2000; IHC: 1:20-1:200
Image:	

### Wuhan Fine Biotech Co., Ltd.

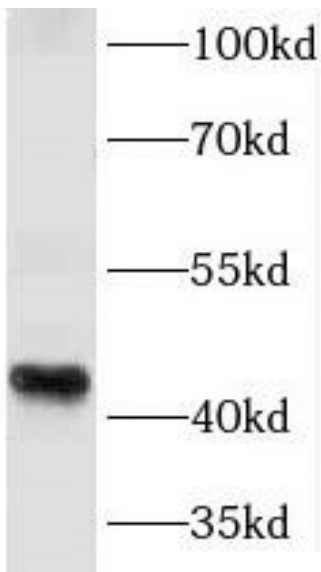
B9 Bld, High-Tech Medical Devices Park, No. 818 GaoxinAve.East Lake High-Tech Development Zone.Wuhan, Hubei, China(430206)

Tel : (0086)027-87384275

Fax: (0086)027-87800889 [www.fn-test.com](http://www.fn-test.com)



Immunohistochemistry of paraffin-embedded human testis using FNab04604(KLF6 antibody) at dilution of 1:200



HEK-293 cells were subjected to SDS PAGE followed by western blot with FNab04604(KLF6 antibody) at dilution of 1:800