

anti- KLF5 antibody

Product Information

Catalog No.:	FNab04603
Size:	100µg
Form:	liquid
Purification:	Immunogen affinity purified
Purity:	≥95% as determined by SDS-PAGE
Host:	Rabbit
Clonality:	polyclonal
Clone ID:	None
IsoType:	IgG
Storage:	PBS with 0.02% sodium azide and 50% glycerol pH 7.3, -20°C for 12 months (Avoid repeated freeze / thaw cycles.)

Background

Transcription factor that binds to GC box promoter elements. Activates the transcription of these genes.

Immunogen information

Immunogen:	Kruppel-like factor 5(intestinal)
Synonyms:	BTEB2, CKLF, IKLF
Observed MW:	50-60 kDa
UniprotID :	Q13887

Application

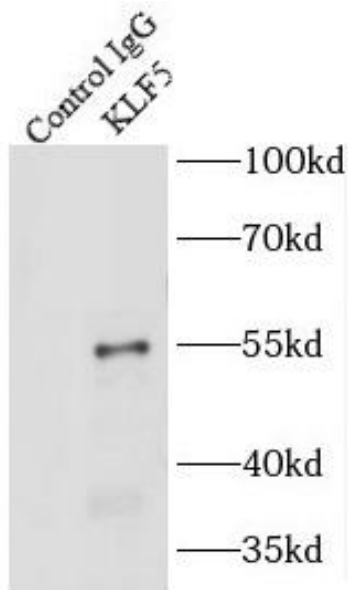
Reactivity:	Human, Mouse, Rat
Tested Application:	ELISA, WB, IP
Recommended dilution:	WB: 1:500-1:2000; IP: 1:200-1:2000
Image:	

Wuhan Fine Biotech Co., Ltd.

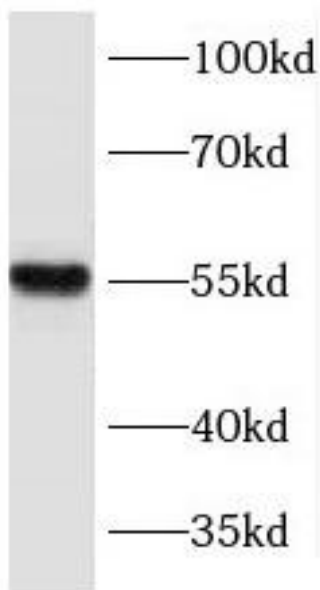
B9 Bld, High-Tech Medical Devices Park, No. 818 GaoxinAve. East Lake High-Tech Development Zone. Wuhan, Hubei, China(430206)

Tel : (0086)027-87384275

Fax: (0086)027-87800889 www.fn-test.com



IP Result of anti-KLF5 (IP:FNab04603, 4ug;
Detection:FNab04603 1:500) with HeLa cells
lysate 2800ug.



HeLa cells were subjected to SDS PAGE followed
by western blot with FNab04603(KLF5 Antibody)
at dilution of 1:1000