

anti- KLC1 antibody

Product Information

Catalog No.:	FNab04594
Size:	100µg
Form:	liquid
Purification:	Immunogen affinity purified
Purity:	≥95% as determined by SDS-PAGE
Host:	Rabbit
Clonality:	polyclonal
Clone ID:	None
IsoType:	IgG
Storage:	PBS with 0.02% sodium azide and 50% glycerol pH 7.3, -20°C for 12 months (Avoid repeated freeze / thaw cycles.)

Background

Conventional kinesin is a tetrameric molecule composed of two heavy chains and two light chains, and transports various cargos along microtubules toward their plus ends. The heavy chains provide the motor activity, while the light chains bind to various cargos. This gene encodes a member of the kinesin light chain family. It associates with kinesin heavy chain through an N-terminal domain, and six tetratricopeptide repeat (TPR) motifs are thought to be involved in binding of cargos such as vesicles, mitochondria, and the Golgi complex. Thus, kinesin light chains function as adapter molecules and not motors per se. Although previously named "kinesin 2", this gene is not a member of the kinesin-2 / kinesin heavy chain subfamily of kinesin motor proteins. Extensive alternative splicing produces isoforms with different C-termini that are proposed to bind to different cargos; however, the full-length nature and/or biological validity of most of these variants have not been determined.

Immunogen information

Immunogen:	kinesin light chain 1
Synonyms:	KLC, KNS2
Observed MW:	66 kDa
Uniprot ID :	Q07866

Application

Reactivity:	Human, Mouse, Rat
Tested Application:	ELISA, WB, IHC, IF

1

Wuhan Fine Biotech Co., Ltd.

B9 Bld, High-Tech Medical Devices Park, No. 818 Gaoxin Ave. East Lake High-Tech Development Zone. Wuhan, Hubei, China(430206)

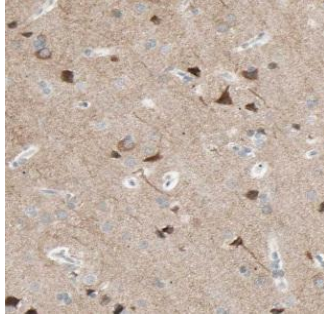
Tel : (0086)027-87384275

Fax: (0086)027-87800889

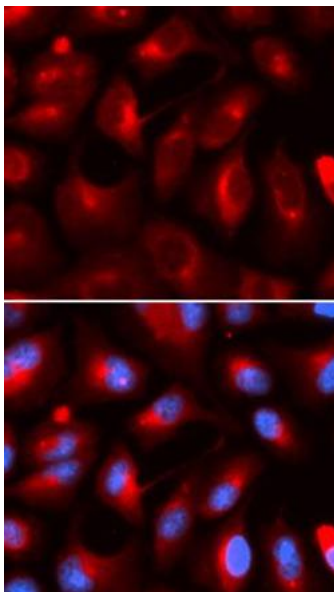
www.fn-test.com

Recommended dilution: WB: 1:500 - 1:2000; IHC: 1:50 - 1:200; IF: 1:50 - 1:200

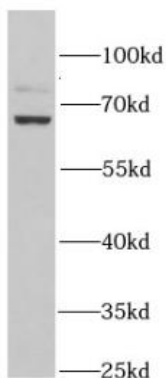
Image:



Immunohistochemistry of paraffin-embedded human brain tissue slide using FNab04594(KLC1 Antibody) at dilution of 1:100



Immunofluorescence analysis of U2OS cells using FNab04594(KLC1 antibody) at dilution of 1:100



mouse brain tissue were subjected to SDS PAGE followed by western blot with FNab04594(KLC1 antibody) at dilution of 1:1000