

anti- KIF6 antibody

Product Information

Catalog No.:	FNab04569
Size:	100µg
Form:	liquid
Purification:	Immunogen affinity purified
Purity:	≥95% as determined by SDS-PAGE
Host:	Rabbit
Clonality:	polyclonal
Clone ID:	None
IsoType:	IgG
Storage:	PBS with 0.02% sodium azide and 50% glycerol pH 7.3, -20°C for 12 months (Avoid repeated freeze / thaw cycles.)

Background

None

Immunogen information

Immunogen:	kinesin family member 6
Synonyms:	C6orf102, dJ1043E3.1, dJ137F1.4, dJ188D3.1, DKFZp451I2418, KIF6, kinesin family member 6, Kinesin like protein KIF6
Observed MW:	93 kDa
Uniprot ID :	Q6ZMV9

Application

Reactivity:	Human, Mouse, Rat
Tested Application:	ELISA, WB, IHC
Recommended dilution:	WB: 1:200-1:2000; IP: 1:200-1:2000; IHC: 1:20-1:200
Image:	

1

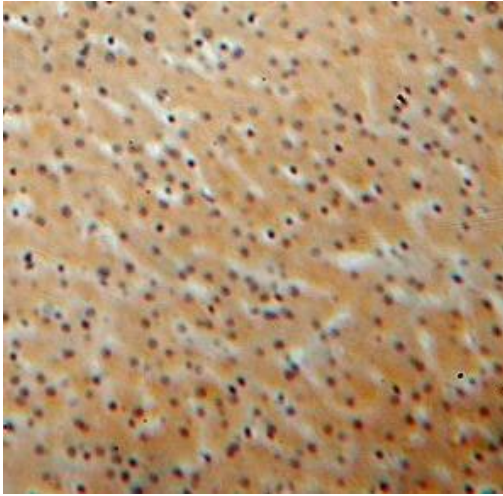
Wuhan Fine Biotech Co., Ltd.

B9 Bld, High-Tech Medical Devices Park, No. 818 Gaoxin Ave. East Lake High-Tech Development Zone. Wuhan, Hubei, China(430206)

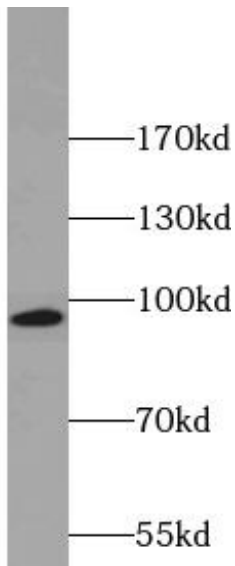
Tel : (0086)027-87384275

Fax: (0086)027-87800889

www.fn-test.com



Immunohistochemistry of paraffin-embedded human liver using FNab04569(KIF6 antibody) at dilution of 1:50



mouse testis tissue were subjected to SDS PAGE followed by western blot with FNab04569(KIF6 antibody) at dilution of 1:800