

anti- KIF5B antibody

Product Information

Catalog No.:	FNab04567
Size:	100µg
Form:	liquid
Purification:	Immunogen affinity purified
Purity:	≥95% as determined by SDS-PAGE
Host:	Rabbit
Clonality:	polyclonal
Clone ID:	None
IsoType:	IgG
Storage:	PBS with 0.02% sodium azide and 50% glycerol pH 7.3, -20°C for 12 months (Avoid repeated freeze / thaw cycles.)

Background

Microtubule-dependent motor required for normal distribution of mitochondria and lysosomes.

Immunogen information

Immunogen:	kinesin family member 5B
Synonyms:	KNS, KNS1
Observed MW:	110-120kd
UniprotID :	P33176

Application

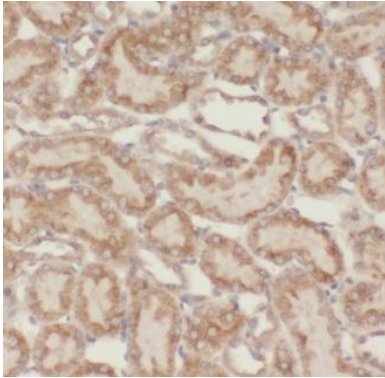
Reactivity:	Human, Mouse, Rat
Tested Application:	ELISA, IHC, WB, IP
Recommended dilution:	WB: 1:500-1:2000; IP: 1:200-1:1000; IHC: 1:20-1:200
Image:	

Wuhan Fine Biotech Co., Ltd.

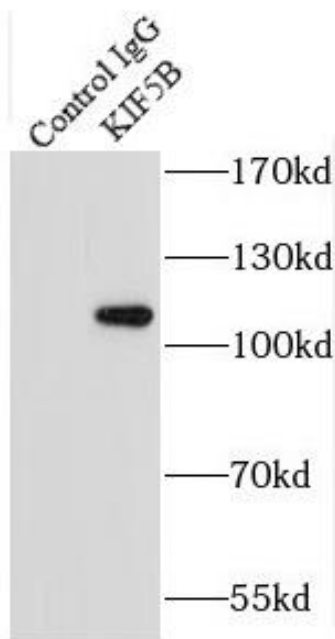
B9 Bld, High-Tech Medical Devices Park, No. 818 GaoxinAve.East Lake High-Tech Development Zone.Wuhan, Hubei, China(430206)

Tel : (0086)027-87384275

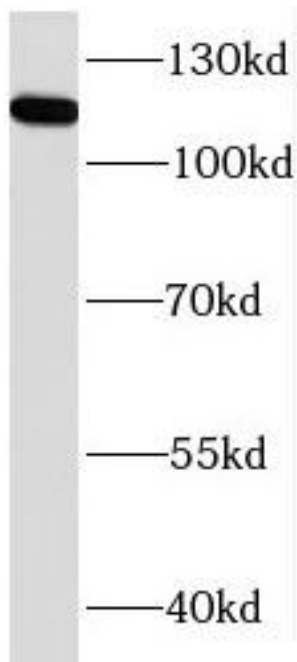
Fax: (0086)027-87800889 www.fn-test.com



Immunohistochemistry of paraffin-embedded human kidney using FNab04567(KIF5B antibody) at dilution of 1:100



IP Result of anti-KIF5B (IP:FNab04567, 5ug; Detection:FNab04567 1:2000) with HepG2 cells lysate 3600ug.



HeLa cells were subjected to SDS PAGE followed by western blot with FNab04567(KIF5B antibody) at dilution of 1:4000

Wuhan Fine Biotech Co., Ltd.

B9 Bld, High-Tech Medical Devices Park, No. 818 GaoxinAve.East Lake High-Tech Development Zone.Wuhan, Hubei, China(430206)

Tel :(0086)027-87384275

Fax: (0086)027-87800889 www.fn-test.com