

## anti- KHDC3L antibody

### Product Information

Catalog No.:	FNab04522
Size:	100µg
Form:	liquid
Purification:	Immunogen affinity purified
Purity:	≥95% as determined by SDS-PAGE
Host:	Rabbit
Clonality:	polyclonal
Clone ID:	None
IsoType:	IgG
Storage:	PBS with 0.02% sodium azide and 50% glycerol pH 7.3, -20°C for 12 months (Avoid repeated freeze / thaw cycles.)

### Background

None

### Immunogen information

Immunogen:	chromosome 6 open reading frame 221
Synonyms:	C6orf221, ECAT1
Observed MW:	21-24 kDa
UniprotID :	Q587J8

### Application

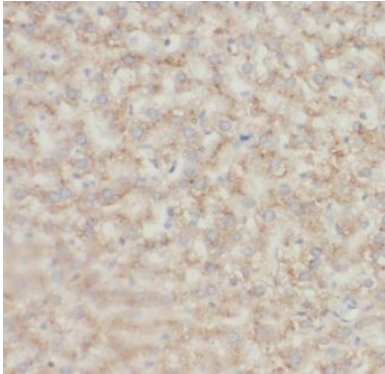
Reactivity:	Human
Tested Application:	ELISA, WB, IHC, IF
Recommended dilution:	WB: 1:500-1:2000; IHC: 1:20-1:200; IF: 1:20-1:200
Image:	

### Wuhan Fine Biotech Co., Ltd.

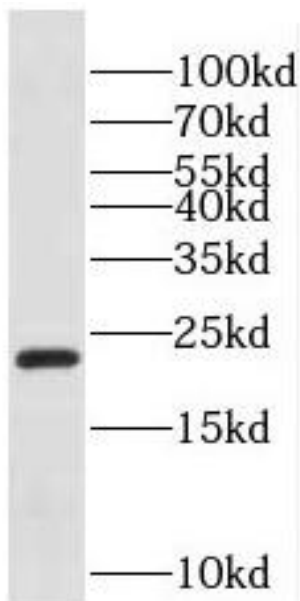
B9 Bld, High-Tech Medical Devices Park, No. 818 GaoxinAve. East Lake High-Tech Development Zone. Wuhan, Hubei, China(430206)

Tel : (0086)027-87384275

Fax: (0086)027-87800889 [www.fn-test.com](http://www.fn-test.com)



Immunohistochemistry of paraffin-embedded human liver cancer tissue slide using FNab04522(C6orf221 Antibody) at dilution of 1:50



human testis tissue were subjected to SDS PAGE followed by western blot with FNab04522(C6orf221 Antibody) at dilution of 1:600