

anti- ITPA antibody

Product Information

Catalog No.:	FNab04420
Size:	100µg
Form:	liquid
Purification:	Immunogen affinity purified
Purity:	≥95% as determined by SDS-PAGE
Host:	Rabbit
Clonality:	polyclonal
Clone ID:	None
IsoType:	IgG
Storage:	PBS with 0.02% sodium azide and 50% glycerol pH 7.3, -20°C for 12 months (Avoid repeated freeze / thaw cycles.)

Background

Pyrophosphatase that hydrolyzes the non-canonical purine nucleotides inosine triphosphate(ITP), deoxyinosine triphosphate(dITP) as well as 2'-deoxy-N-6-hydroxylaminopurine triphosphate(dHAPTP) and xanthosine 5'-triphosphate(XTP) to their respective monophosphate derivatives. The enzyme does not distinguish between the deoxy-and ribose forms. Probably excludes non-canonical purines from RNA and DNA precursor pools, thus preventing their incorporation into RNA and DNA and avoiding chromosomal lesions.

Immunogen information

Immunogen:	inosinetriphosphatase(nucleoside triphosphate pyrophosphatase)
Synonyms:	C20orf37
Observed MW:	22 kDa
UniprotID :	Q9BY32

Application

Reactivity:	Human, Mouse, Rat
Tested Application:	ELISA, WB, IF, IHC, IP

Wuhan Fine Biotech Co., Ltd.

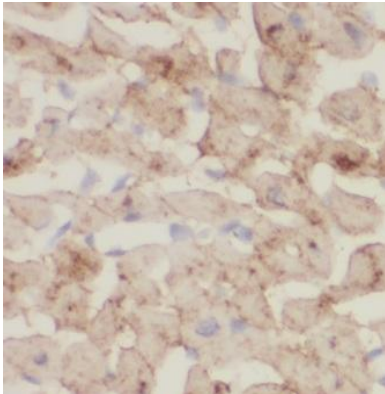
B9 Bld, High-Tech Medical Devices Park, No. 818 GaoxinAve.East Lake High-Tech Development Zone.Wuhan, Hubei, China(430206)

Tel : (0086)027-87384275

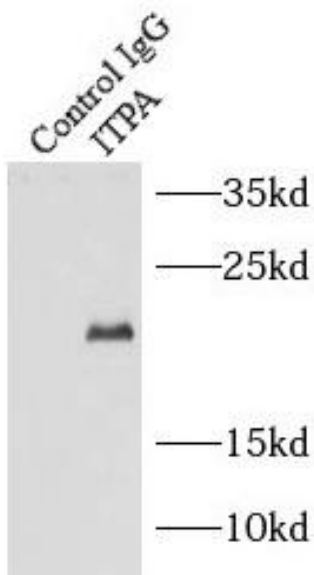
Fax: (0086)027-87800889 www.fn-test.com

Recommended dilution: WB: 1:500-1:2000; IP: 1:200-1:1000; IHC: 1:20-1:200; IF: 1:20-1:200

Image:



Immunohistochemistry of paraffin-embedded human heart tissue slide using FNab04420(ITPA Antibody) at dilution of 1:50



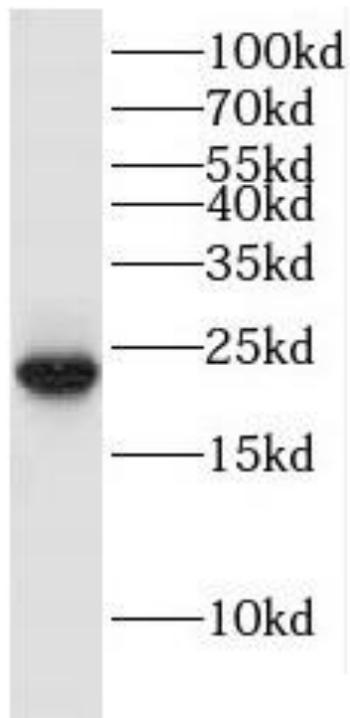
IP Result of anti-ITPA (IP:FNab04420, 4ug; Detection:FNab04420 1:1000) with mouse liver tissue lysate 4000ug.

Wuhan Fine Biotech Co., Ltd.

B9 Bld, High-Tech Medical Devices Park, No. 818 GaoxinAve. East Lake High-Tech Development Zone. Wuhan, Hubei, China(430206)

Tel : (0086)027-87384275

Fax: (0086)027-87800889 www.fn-test.com



K-562 cells were subjected to SDS PAGE followed by western blot with FNab04420(ITPA antibody) at dilution of 1:1000