

anti- IL-6 antibody

Product Information

Catalog No.:	FNab04282
Size:	100µg
Form:	liquid
Purification:	Immunogen affinity purified
Purity:	≥95% as determined by SDS-PAGE
Host:	Rabbit
Clonality:	polyclonal
IsoType:	IgG
Storage:	PBS with 0.02% sodium azide and 50% glycerol pH 7.3, -20°C for 12 months (Avoid repeated freeze / thaw cycles.)

Background

Interleukin-6(IL-6) is an interleukin that acts as both a pro-inflammatory and anti-inflammatory cytokine. IL-6 protein is secreted by a variety of cell types including T cells and macrophages as phosphorylated and variably glycosylated molecule. IL-6 Plays an essential role in the final differentiation of B-cells into Ig-secreting cells involved in lymphocyte and monocyte differentiation. It induces myeloma and plasmacytoma growth and induces nerve cells differentiation Acts on B-cells, T-cells, hepatocytes, hematopoietic progenitor cells and cells of the CNS. IL-6 is also considered a myokine, a cytokine produced from muscle, and is elevated in response to muscle contraction. IL-6 has been shown to interact with interleukin-6 receptor and glycoprotein 130. Additionally, IL-6 is involved in hematopoiesis, bone metabolism, and cancer progression, and has been defined an essential role in directing transition from innate to acquired immunity.

Immunogen information

Immunogen:	interleukin 6(interferon, beta 2)
Synonyms:	B cell stimulatory factor 2, BSF 2, BSF2, CDF, CTL differentiation factor, HGF, HSF, Hybridoma growth factor, IFN beta 2, IFNB2, IL 6, IL6, IL-6, Interferon beta 2, Interleukin 6
Observed MW:	24 kDa
Uniprot ID :	P05231

Wuhan Fine Biotech Co., Ltd.

B9 Bld, High-Tech Medical Devices Park, No. 818 Gaoxin Ave. East Lake High-Tech Development Zone. Wuhan, Hubei, China(430206)

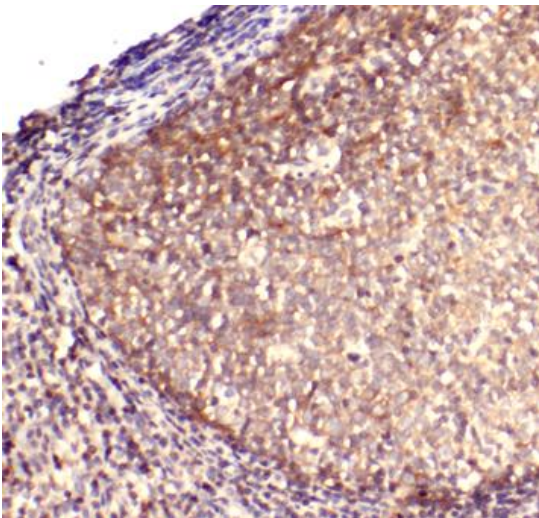
Application

Reactivity: Human, Mouse, Rat

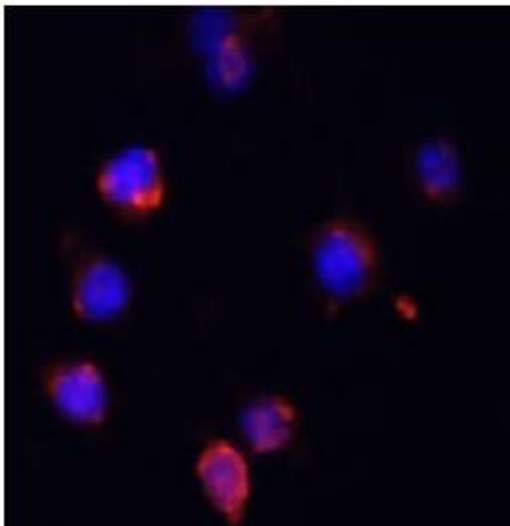
Tested Application: ELISA, WB, IHC, IF

Recommended dilution: WB: 1:500-1:1000; IHC: 1:50-1:200; IF: 1:50-1:200

Image:



Immunohistochemistry of paraffin-embedded human tonsillitis tissue slide using FNab04282(IL6 Antibody) at dilution of 1:200



Immunofluorescence analysis of RAW264.7 cells using IL-6 antibody (FNab04282) at dilution of 1:100. Blue: DAPI for nuclear staining.

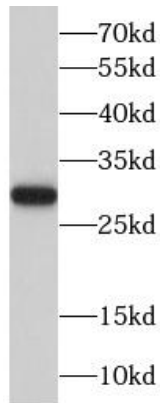
Wuhan Fine Biotech Co., Ltd.

B9 Bld, High-Tech Medical Devices Park, No. 818 Gaoxin Ave. East Lake High-Tech Development Zone. Wuhan, Hubei, China(430206)

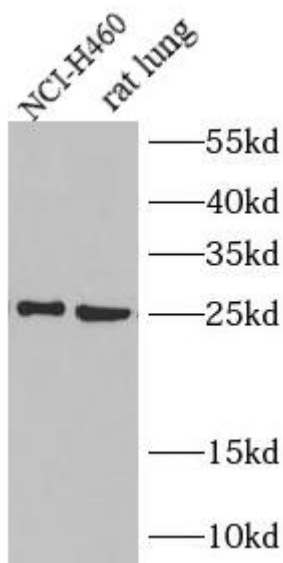
Tel : (0086)027-87384275

Fax: (0086)027-87800889

www.fn-test.com



Recombinant protein were subjected to SDS PAGE followed by western blot with FNab04282(II6 Antibody) at dilution of 1:600



Various lysates were subjected to SDS PAGE followed by western blot with FNab04282(II6 Antibody) at dilution of 1:600