

anti- IL1RL2 antibody

Product Information

Catalog No.:	FNab04246
Size:	100µg
Form:	liquid
Purification:	Immunogen affinity purified
Purity:	≥95% as determined by SDS-PAGE
Host:	Rabbit
Clonality:	polyclonal
IsoType:	IgG
Storage:	PBS with 0.02% sodium azide and 50% glycerol pH 7.3, -20°C for 12 months (Avoid repeated freeze / thaw cycles.)

Background

Receptor for interleukin-36(IL36A, IL36B and IL36G). After binding to interleukin-36 associates with the coreceptor IL1RAP to form the interleukin-36 receptor complex which mediates interleukin-36-dependent activation of NF-kappa-B, MAPK and other pathways(By similarity). The IL-36 signaling system is thought to be present in epithelial barriers and to take part in local inflammatory response; it is similar to the IL-1 system. Seems to be involved in skin inflammatory response by induction of the IL-23/IL-17/IL-22 pathway.

Immunogen information

Immunogen:	interleukin 1 receptor-like 2
Synonyms:	IL 1Rrp2, IL1R rp2, IL1RL2, IL1RRP2, interleukin 1 receptor like 2
Observed MW:	65 kDa
Uniprot ID :	Q9HB29

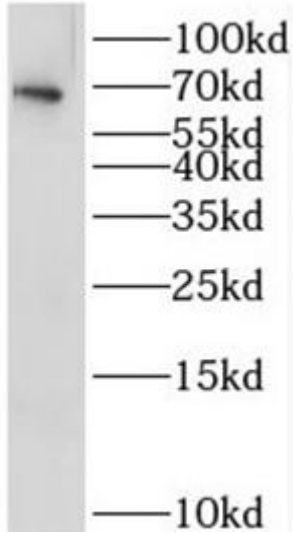
Application

Reactivity:	Human
Tested Application:	ELISA, WB, FC
Recommended dilution:WB:	1:500 - 1:1000

Wuhan Fine Biotech Co., Ltd.

B9 Bld, High-Tech Medical Devices Park, No. 818 Gaoxin Ave. East Lake High-Tech Development Zone. Wuhan, Hubei, China(430206)

Image:



K-562 cells were subjected to SDS PAGE followed by western blot with FNab04246(IL1RL2 Antibody) at dilution of 1:300

Wuhan Fine Biotech Co., Ltd.

B9 Bld, High-Tech Medical Devices Park, No. 818 Gaoxin Ave. East Lake High-Tech Development Zone. Wuhan, Hubei, China(430206)

Tel : (0086)027-87384275

Fax: (0086)027-87800889

www.fn-test.com