

## anti- IGFBP3 antibody

### Product Information

Catalog No.:	FNab04178
Size:	100µg
Form:	liquid
Purification:	Immunogen affinity purified
Purity:	≥95% as determined by SDS-PAGE
Host:	Rabbit
Clonality:	polyclonal
Clone ID:	None
IsoType:	IgG
Storage:	PBS with 0.02% sodium azide and 50% glycerol pH 7.3, -20°C for 12 months (Avoid repeated freeze / thaw cycles.)

### Background

IGF-binding proteins prolong the half-life of the IGFs and have been shown to either inhibit or stimulate the growth promoting effects of the IGFs on cell culture. They alter the interaction of IGFs with their cell surface receptors. Also exhibits IGF-independent antiproliferative and apoptotic effects mediated by its receptor TMEM219/IGFBP-3R.

### Immunogen information

Immunogen:	insulin-like growth factor binding protein 3
Synonyms:	BP 53, IBP 3, IBP3, IGF binding protein 3, IGFBP 3, IGFBP3
Observed MW:	32kd
Uniprot ID :	P17936

### Application

Reactivity:	Human, Mouse, Rat
Tested Application:	ELISA, WB, IHC, IF
Recommended dilution:	WB: 1:200-1:500; IHC: 1:20-1:200; IF: 1:10-1:100

### Wuhan Fine Biotech Co., Ltd.

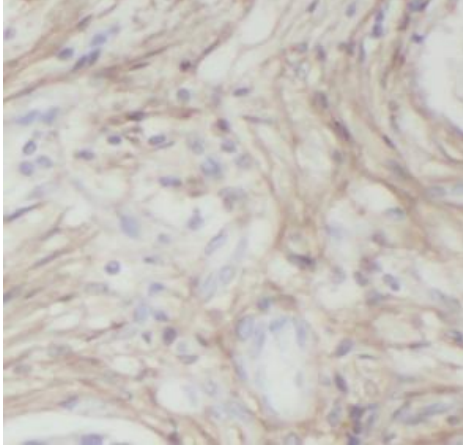
B9 Bld, High-Tech Medical Devices Park, No. 818 Gaoxin Ave. East Lake High-Tech Development Zone. Wuhan, Hubei, China(430206)

Tel : (0086)027-87384275

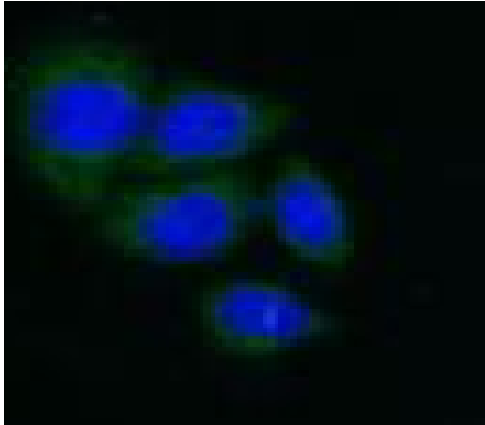
Fax: (0086)027-87800889

[www.fn-test.com](http://www.fn-test.com)

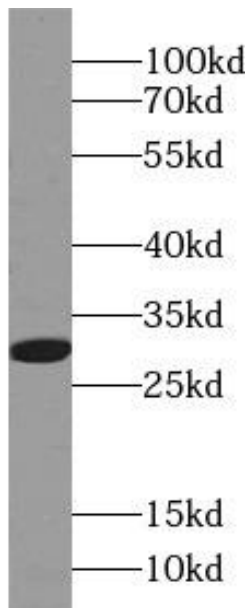
Image:



Immunohistochemistry of paraffin-embedded human breast cancer using FNab04178(IGFBP3 antibody) at dilution of 1:50



Immunofluorescent analysis of HeLa cells using FNab04178 (IGFBP3 antibody) at dilution of 1:25 and Alexa Fluor 488-conjugated Goat Anti-Rabbit IgG(H+L)



A2780 cells were subjected to SDS PAGE  
followed by western blot with  
FNab04178(IGFBP3 antibody) at dilution of 1:100

**Wuhan Fine Biotech Co., Ltd.**

B9 Bld, High-Tech Medical Devices Park, No. 818 Gaoxin Ave. East Lake High-Tech Development Zone. Wuhan, Hubei, China(430206)

Tel : (0086)027-87384275

Fax: (0086)027-87800889

[www.fn-test.com](http://www.fn-test.com)