

## anti- IFT81 antibody

### Product Information

Catalog No.:	FNab04162
Size:	100µg
Form:	liquid
Purification:	Immunogen affinity purified
Purity:	≥95% as determined by SDS-PAGE
Host:	Rabbit
Clonality:	polyclonal
Clone ID:	None
IsoType:	IgG
Storage:	PBS with 0.02% sodium azide and 50% glycerol pH 7.3, -20°C for 12 months (Avoid repeated freeze / thaw cycles.)

### Background

Component of the intraflagellartransport(IFT) complex B: together with IFT74, forms a tubulin-binding module that specifically mediates transport of tubulin within the cilium. Binds tubulin via its CH(calponin-homology)-like region. Required for ciliogenesis.

### Immunogen information

Immunogen:	intraflagellar transport 81 homolog(Chlamydomonas)
Synonyms:	CDV1
Observed MW:	70-80kd
UniprotID :	Q8WYA0

### Application

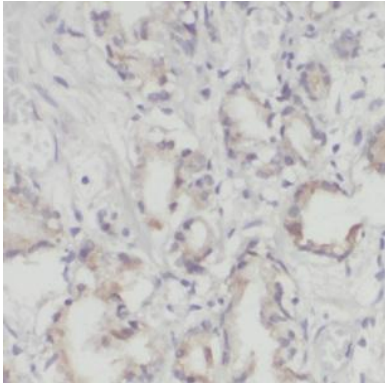
Reactivity:	Human, Mouse, Rat
Tested Application:	ELISA, IHC, WB
Recommended dilution:	WB: 1:500-1:2000; IHC: 1:20-1:200
Image:	

### Wuhan Fine Biotech Co., Ltd.

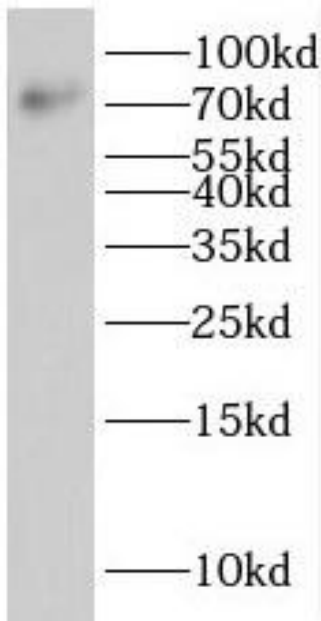
B9 Bld, High-Tech Medical Devices Park, No. 818 GaoxinAve.East Lake High-Tech Development Zone.Wuhan, Hubei, China(430206)

Tel :( 0086)027-87384275

Fax: (0086)027-87800889 [www.fn-test.com](http://www.fn-test.com)



Immunohistochemical of paraffin-embedded human prostate cancer using FNab04162(IFIT81 antibody) at dilution of 1:50



mouse kidney tissue were subjected to SDS PAGE followed by western blot with FNab04162(IFIT81 antibody) at dilution of 1:500