

## anti- HLA-E antibody

### Product Information

Catalog No.:	FNab03910
Size:	100µg
Form:	liquid
Purification:	Immunogen affinity purified
Purity:	≥95% as determined by SDS-PAGE
Host:	Rabbit
Clonality:	polyclonal
Clone ID:	None
IsoType:	IgG
Storage:	PBS with 0.02% sodium azide and 50% glycerol pH 7.3, -20°C for 12 months (Avoid repeated freeze / thaw cycles.)

### Background

Preferably binds to a peptide derived from the signal sequence of most HLA-A,-B,-C and-G molecules.

### Immunogen information

Immunogen:	major histocompatibility complex, class I, E
Synonyms:	HLA-6.2, HLAE
Observed MW:	40kd
Uniprot ID :	P13747

### Application

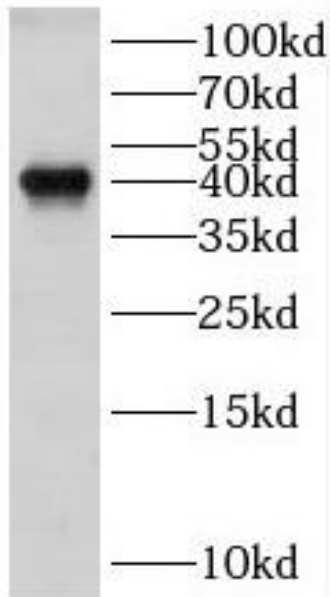
Reactivity:	Human
Tested Application:	ELISA, WB
Recommended dilution:WB:	1:500-1:2000
Image:	

### Wuhan Fine Biotech Co., Ltd.

B9 Bld, High-Tech Medical Devices Park, No. 818 Gaoxin Ave. East Lake High-Tech Development Zone. Wuhan, Hubei, China(430206)

Tel : (0086)027-87384275

Fax: (0086)027-87800889 [www.fn-test.com](http://www.fn-test.com)



THP-1 cells were subjected to SDS PAGE followed by western blot with FNab03910(HLA-E antibody) at dilution of 1:600