

## anti- Hemoglobin epsilon antibody

### Product Information

Catalog No.:	FNab03826
Size:	100µg
Form:	liquid
Purification:	Immunogen affinity purified
Purity:	≥95% as determined by SDS-PAGE
Host:	Rabbit
Clonality:	polyclonal
Clone ID:	None
IsoType:	IgG
Storage:	PBS with 0.02% sodium azide and 50% glycerol pH 7.3, -20°C for 12 months (Avoid repeated freeze / thaw cycles.)

### Background

The hemoglobin molecule is a tetramer consisting of two alpha-and two beta-globin-like chains. HBE1(hemoglobin epsilon chain) is a beta-type chain of hemoglobin predominantly expressed during the embryonic stage(21321359). The HBE1 has been regarded as the best marker for fetal nucleated red blood cells(NRBCs) . This antibody can be used to label and isolate fetal cells from maternal blood and may be useful in prenatal diagnosis(15906407).

### Immunogen information

Immunogen:	hemoglobin, epsilon 1
Synonyms:	Epsilon globin, HBE, HBE1, Hemoglobin epsilon chain, Hemoglobin subunit epsilon, hemoglobin, epsilon 1
Observed MW:	12-16 kDa
Uniprot ID :	P02100

### Application

Reactivity:	Human, Mouse, Rat
Tested Application:	ELISA, WB, IHC

### Wuhan Fine Biotech Co., Ltd.

B9 Bld, High-Tech Medical Devices Park, No. 818 Gaoxin Ave. East Lake High-Tech Development Zone. Wuhan, Hubei, China(430206)

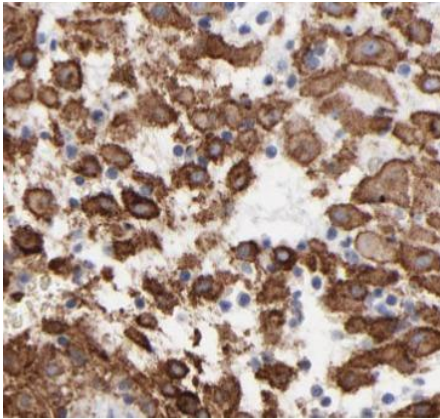
Tel : (0086)027-87384275

Fax: (0086)027-87800889

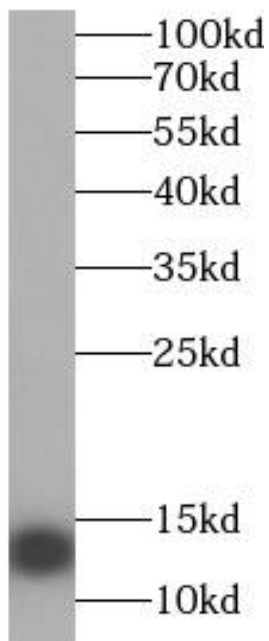
[www.fn-test.com](http://www.fn-test.com)

Recommended dilution: WB: 1:500-1:2000; IHC: 1:20-1:200

Image:



Immunohistochemistry of paraffin-embedded human placenta using FNab03826(HBE1 antibody) at dilution of 1:50



human placenta tissue were subjected to SDS PAGE followed by western blot with FNab03826(HBE1 antibody) at dilution of 1:1000

**Wuhan Fine Biotech Co., Ltd.**

B9 Bld, High-Tech Medical Devices Park, No. 818 Gaoxin Ave. East Lake High-Tech Development Zone. Wuhan, Hubei, China(430206)

Tel : (0086)027-87384275

Fax: (0086)027-87800889

[www.fn-test.com](http://www.fn-test.com)