

anti- Growth hormone antibody

Product Information

Catalog No.:	FNab03660
Size:	100µg
Form:	liquid
Purification:	Immunogen affinity purified
Purity:	≥95% as determined by SDS-PAGE
Host:	Rabbit
Clonality:	polyclonal
Clone ID:	None
IsoType:	IgG
Storage:	PBS with 0.02% sodium azide and 50% glycerol pH 7.3, -20°C for 12 months (Avoid repeated freeze / thaw cycles.)

Background

GH1, also named as GH and GH-N, belongs to the somatotropin/prolactin family. GH1 plays an important role in growth control. Its major role in stimulating body growth is to stimulate the liver and other tissues to secrete IGF-1. It stimulates both the differentiation and proliferation of myoblasts. It also stimulates amino acid uptake and protein synthesis in muscle and other tissues. This antibody has no cross reaction to CSH1.

Immunogen information

Immunogen:	growth hormone 1
Synonyms:	GH, GH N, GH1, GHN, Growth hormone, growth hormone 1, hGH N, Pituitary growth hormone, Somatotropin
Observed MW:	22kd
Uniprot ID :	P01241

Application

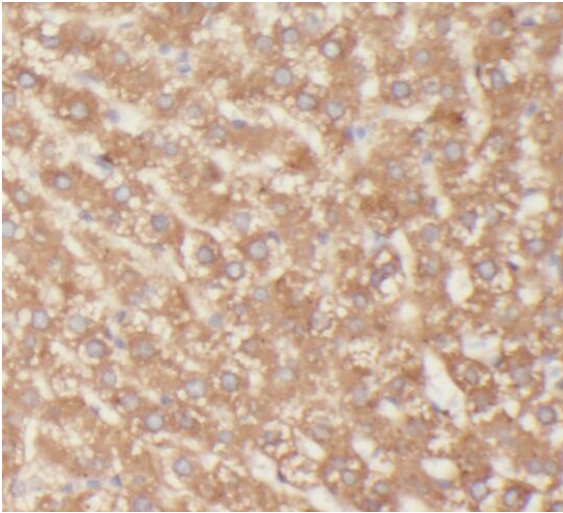
Reactivity:	Human
Tested Application:	ELISA, WB, IHC

Wuhan Fine Biotech Co., Ltd.

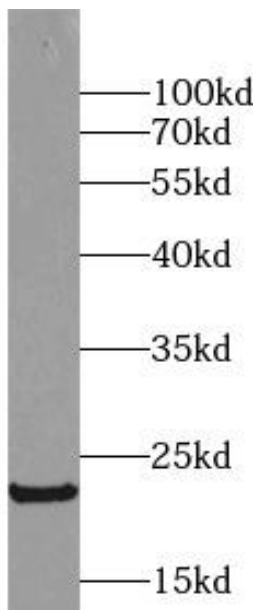
B9 Bld, High-Tech Medical Devices Park, No. 818 Gaoxin Ave. East Lake High-Tech Development Zone. Wuhan, Hubei, China(430206)

Recommended dilution: WB: 1:500-1:5000; IHC: 1:50-1:500

Image:



Immunohistochemistry of paraffin-embedded human pituitary adenoma tissue slide using FNab03660(GH1 Antibody) at dilution of 1:50



human placenta tissue were subjected to SDS PAGE followed by western blot with FNab03660(GH1 antibody) at dilution of 1:1000

Wuhan Fine Biotech Co., Ltd.

B9 Bld, High-Tech Medical Devices Park, No. 818 Gaoxin Ave. East Lake High-Tech Development Zone. Wuhan, Hubei, China(430206)

Tel : (0086)027-87384275

Fax: (0086)027-87800889

www.fn-test.com