

anti- GLUT3 antibody

Product Information

Catalog No.:	FNab03502
Size:	100µg
Form:	liquid
Purification:	Immunogen affinity purified
Purity:	≥95% as determined by SDS-PAGE
Host:	Rabbit
Clonality:	polyclonal
Clone ID:	None
IsoType:	IgG
Storage:	PBS with 0.02% sodium azide and 50% glycerol pH 7.3, -20°C for 12 months (Avoid repeated freeze / thaw cycles.)

Background

GLUT3(SLC2A3) belongs to the glucose transporter family(GLUTs) which mediates the transport of glucose across cellular membranes in mammalian cells. There are three subclasses within GLUTs: class I comprises the classical transporters GLUT1-4 and GLUT14; class II contains the "odd" isoforms GLUT5, 7, 9, and 11; the isoforms GLUT6, 8, 10, 12 and the proton driven myoinositol transporter HMIT(GLUT13) belong to class III. This antibody was generated against the internal region of human GLUT3 and may cross-react with GLUT14.

Immunogen information

Immunogen:	solute carrier family 2(facilitated glucose transporter), member 3
Synonyms:	GLUT 3, GLUT3, SLC2A3
Observed MW:	50kd
Uniprot ID :	P11169

Application

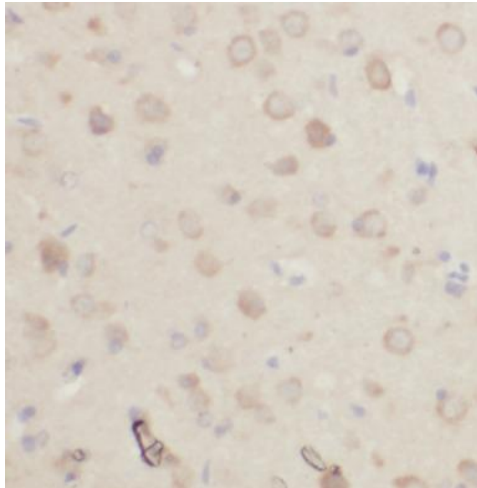
Reactivity:	Human, Mouse
Tested Application:	ELISA, IHC, WB

Wuhan Fine Biotech Co., Ltd.

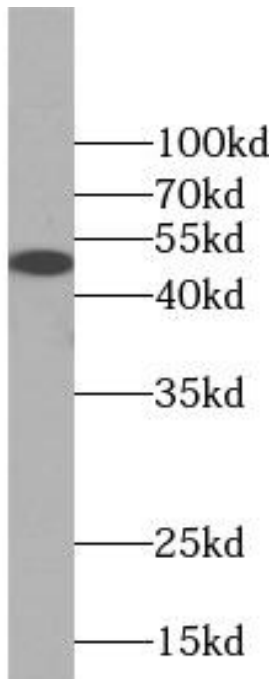
B9 Bld, High-Tech Medical Devices Park, No. 818 Gaoxin Ave. East Lake High-Tech Development Zone. Wuhan, Hubei, China(430206)

Recommended dilution: WB: 1:200-1:2000; IHC: 1:20-1:200

Image:



Immunohistochemistry of paraffin-embedded human brain slide using FNab03502(SLC2A3 Antibody) at dilution of 1:50



mouse brain tissue were subjected to SDS PAGE followed by western blot with FNab03502(SLC2A3 Antibody) at dilution of 1:600