

anti- GLRA2 antibody

Product Information

Catalog No.:	FNab03487
Size:	100µg
Form:	liquid
Purification:	Immunogen affinity purified
Purity:	≥95% as determined by SDS-PAGE
Host:	Rabbit
Clonality:	polyclonal
Clone ID:	None
IsoType:	IgG
Storage:	PBS with 0.02% sodium azide and 50% glycerol pH 7.3, -20°C for 12 months (Avoid repeated freeze / thaw cycles.)

Background

Glycine receptors are ligand-gated chloride channels. Channel opening is triggered by extracellular glycine(PubMed:2155780, PubMed:15302677, PubMed:16144831, PubMed:23895467, PubMed:25445488). Channel opening is also triggered by taurine and beta-alanine(PubMed:15302677). Plays a role in the down-regulation of neuronal excitability. Contributes to the generation of inhibitory postsynaptic currents(PubMed:25445488). Plays a role in cellular responses to ethanol(PubMed:23895467).

Immunogen information

Immunogen:	glycine receptor, alpha 2
Synonyms:	GLR, GLRA2, glycine receptor, alpha 2
Observed MW:	48 kDa
Uniprot ID :	P23416

Application

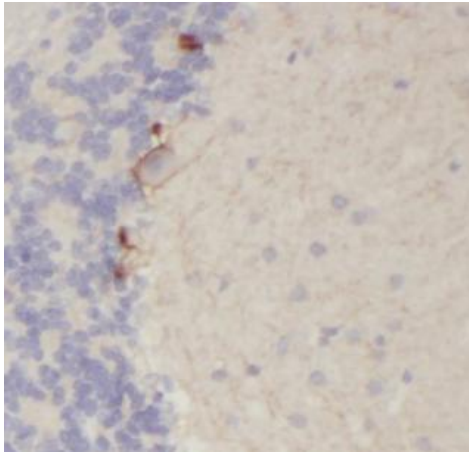
Reactivity:	Human, Mouse, Rat
Tested Application:	ELISA, WB, IHC

Wuhan Fine Biotech Co., Ltd.

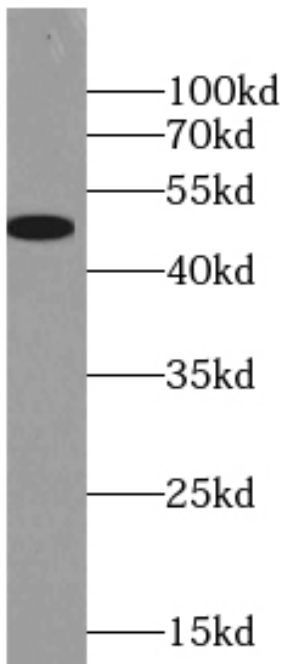
B9 Bld, High-Tech Medical Devices Park, No. 818 Gaoxin Ave. East Lake High-Tech Development Zone. Wuhan, Hubei, China(430206)

Recommended dilution: WB: 1:500-1:1000; IHC: 1:20-1:200

Image:



Immunohistochemistry of paraffin-embedded mouse brain tissue slide using FNab03487(GLRA2 Antibody) at dilution of 1:50



Rat brain tissue were subjected to SDS PAGE followed by western blot with FNab03487(GLRA2 antibody) at dilution of 1:500

Wuhan Fine Biotech Co., Ltd.

B9 Bld, High-Tech Medical Devices Park, No. 818 Gaoxin Ave. East Lake High-Tech Development Zone. Wuhan, Hubei, China(430206)

Tel : (0086)027-87384275

Fax: (0086)027-87800889

www.fn-test.com