

## anti- GCLC antibody

### Product Information

Catalog No.:	FNab03386
Size:	100µg
Form:	liquid
Purification:	Immunogen affinity purified
Purity:	≥95% as determined by SDS-PAGE
Host:	Rabbit
Clonality:	polyclonal
Clone ID:	None
IsoType:	IgG
Storage:	PBS with 0.02% sodium azide and 50% glycerol pH 7.3, -20°C for 12 months (Avoid repeated freeze / thaw cycles.)

### Immunogen information

Immunogen:	glutamate-cysteine ligase, catalytic subunit
Synonyms:	GLCL, GLCLC
Observed MW:	73kd
Uniprot ID :	P48506

### Application

Reactivity:	Human, Mouse, Rat
Tested Application:	ELISA, WB, IHC, IP
Recommended dilution:	WB: 1:1000-1:5000; IP: 1:500-1:1000; IHC: 1:50-1:200
Image:	

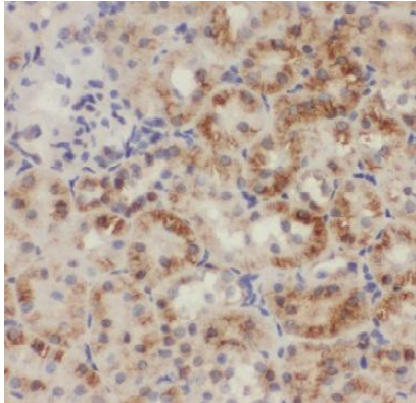
### Wuhan Fine Biotech Co., Ltd.

B9 Bld, High-Tech Medical Devices Park, No. 818 Gaoxin Ave. East Lake High-Tech Development Zone. Wuhan, Hubei, China(430206)

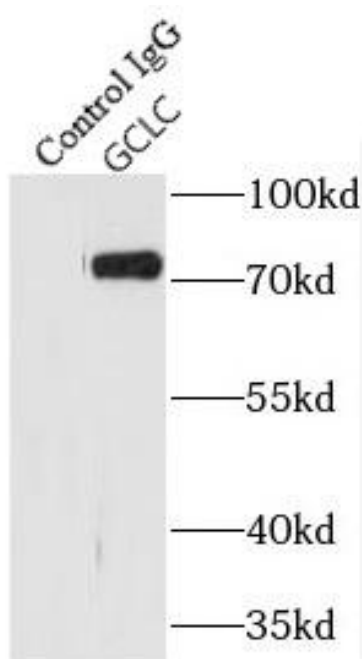
Tel : (0086)027-87384275

Fax: (0086)027-87800889

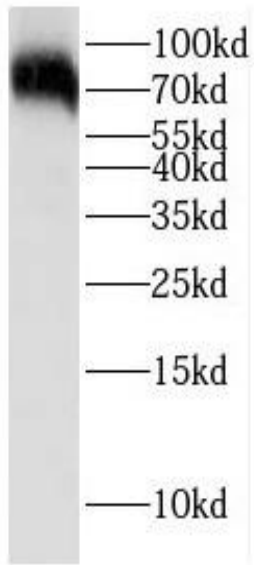
[www.fn-test.com](http://www.fn-test.com)



Immunohistochemistry of paraffin-embedded human kidney using FNab03386(GCLC antibody) at dilution of 1:50



IP Result of anti-GCLC (IP:FNab03386, 3ug; Detection:FNab03386 1:500) with mouse kidney tissue lysate 4000ug.



Jurkat cells were subjected to SDS PAGE followed by western blot with FNab03386(GCLC antibody) at dilution of 1:2000